



## Plough Lane, SW17

### £525,000

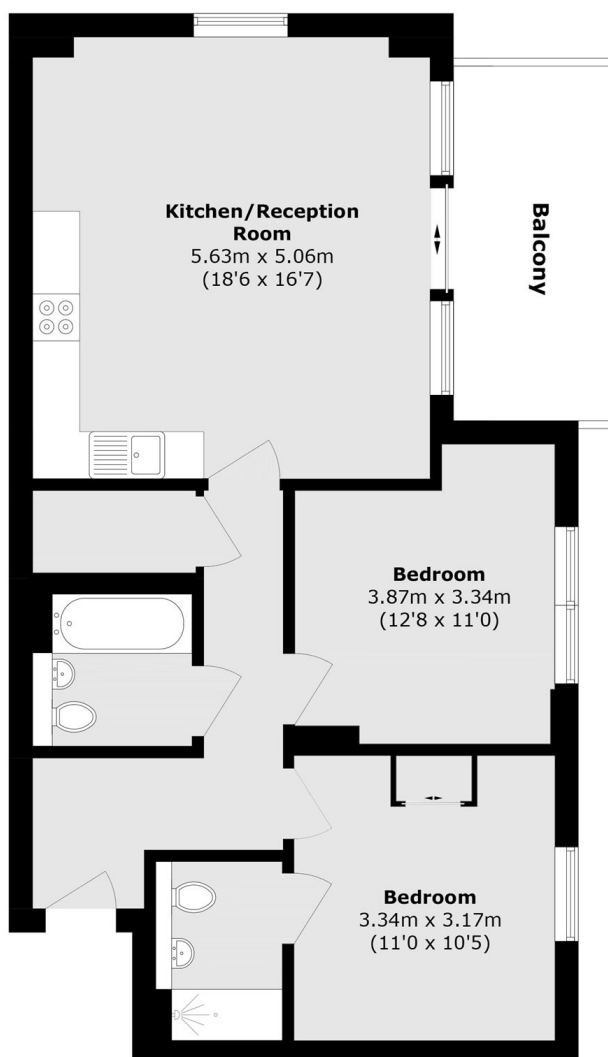
A stunning and well maintained two double bedroom modern apartment with a stunning open plan kitchen/ reception room with a fitted kitchen with wall and base units and integral appliances, a comfortable seating and dining area with a large balcony, two double bedrooms and two bathrooms.

Ideally located within close proximity to Wimbledon, Tooting and Earlsfield town centres and their vast amenities, the property is well located for an eclectic mix of shops, bars and restaurants as well as the excellent transport links via Earlsfield & Tooting Broadway stations.

### Features

- Two Double Bedrooms
- Two Bathrooms
- South Facing Balcony
- 999 Year Lease
- Sought After Development
- Desirable Location

# Plough Lane, London, SW17



Total area (approx.): 74.1 sq. m (797.6 sq. ft)

Balcony area (approx.): 9.0 sq. m (96.8 sq. ft)

## Dexters

Tooting  
48 Tooting High Street  
London  
SW17 0RG  
Sales  
020 8545 8582

Energy Rating: B. We aim to make our particulars both accurate and reliable. However they are not guaranteed; nor do they form part of an offer or contract. If you require clarification on any points then please contact us, especially if you're traveling some distance to view. Please note that appliances and heating systems have not been tested and therefore no warranties can be given as to their good working order.

 **RICS** | Regulated  
Estate Agent  
and Letting Agent

[dexters.co.uk](https://www.dexters.co.uk)