



Mitcham Road, SW17

£2,700 Per calendar month

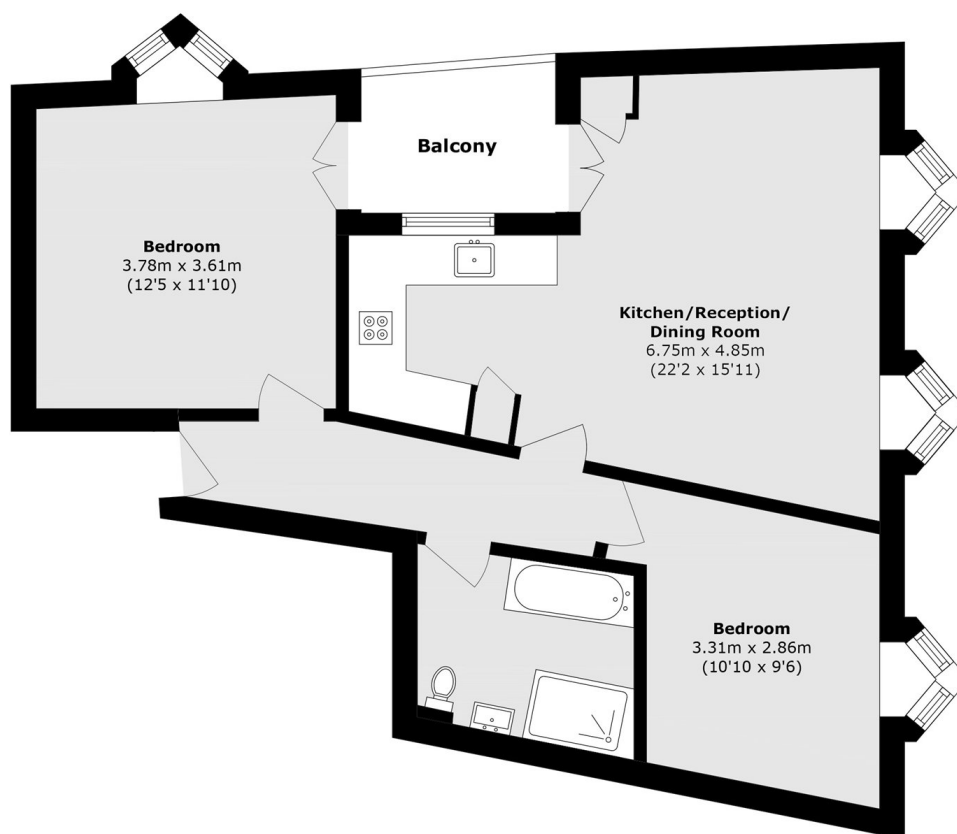
A newly refurbished two bedroom apartment. The property benefits from a three piece bathroom, a modern kitchen and an open plan living area and private balcony, making it perfect for professional sharers.

Mitcham Road is located in central Tooting with exquisite eateries, shops and bars on the doorstep. Not the mention the excellent transport links via Tooting Broadway Underground Station.

Features

- New Build
- Two Double Bedrooms
- Open Plan Kitchen/Living Area
- Private Balcony
- Beautifully Decorated
- Prime Location

Mitcham Road, Tooting, SW17



Total area (approx.): 63.1 sq. m (679.2 sq. ft)

Balcony area (approx.): 4.4 sq. m (47.3 sq. ft)