



Deal Road, SW17

£750,000

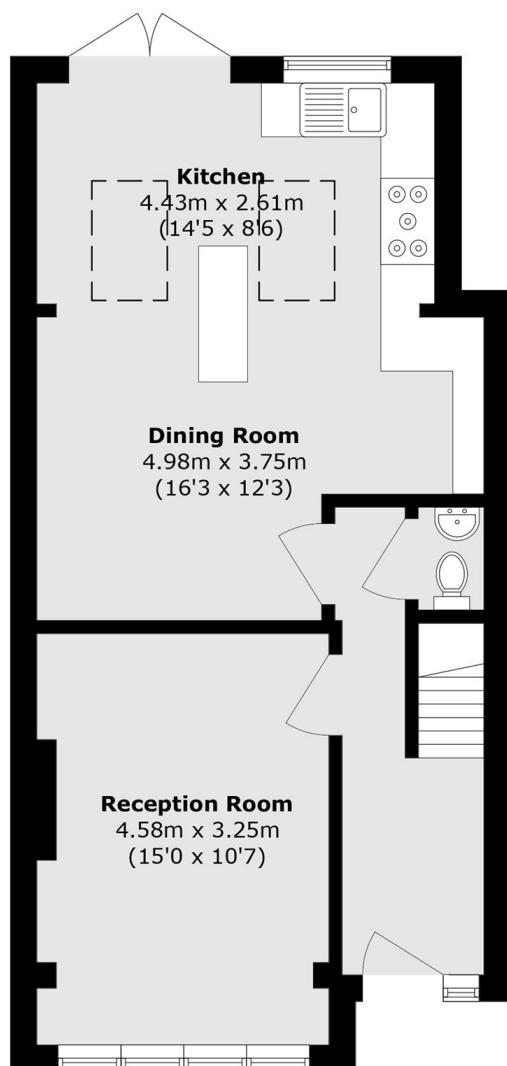
A well arranged and positioned three bedroom house on the highly desirable ABC roads with a stylish and extended open-plan kitchen/reception room with doors opening onto a private garden, three bedrooms, a front reception room, downstairs w/c and a family bathroom. The property retains great scope to extend via the loft STPP.

Deal Road is a quiet residential tree-lined road located in the ABC roads with excellent proximity to the many shops, bars and restaurants of central Tooting and Furzedown Village, with the convenient transport links of Tooting overground and Tooting Broadway tube and outstanding schools within walking distance.

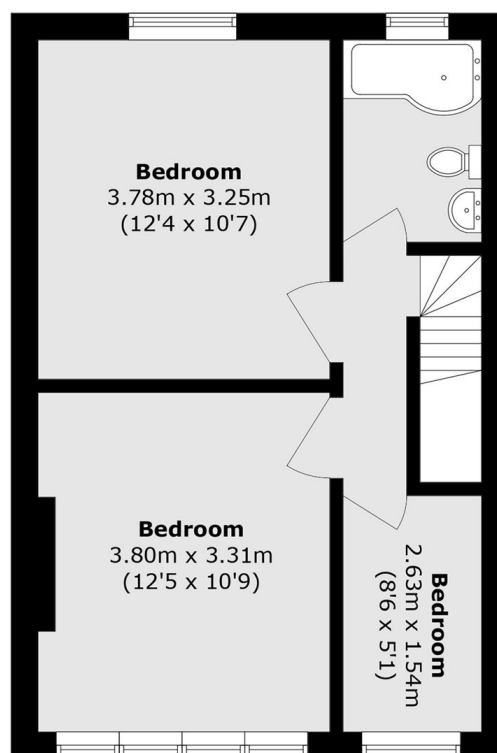
Features

- Three Bedrooms
- Potential to Extend (STPP)
- Open-Plan Kitchen/Reception Room
- ABC Roads
- Desirable Location
- Chain Free

Deal Road, London, SW17



Ground Floor



First Floor

Total area (approx.): 88.7 sq. m (954.8 sq. ft)