



Seely Road, SW17

£625,000

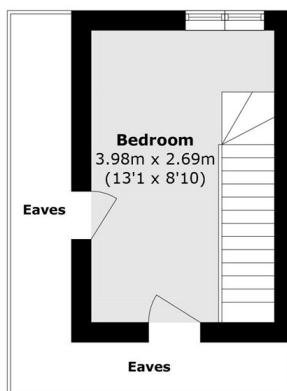
A three bedroom family home in ABC roads, offering well-balanced living and entertaining space arranged over three floors. The ground floor comprises a bright and spacious open-plan kitchen/reception room with ample space for dining flooded with natural light and providing direct access to a private rear garden. Over the first and top floors, there are three generous bedrooms and a three piece family bathroom.

Seely Road is a desirable residential street occupying great proximity to the many shops, bars and restaurants of Tooting High Street and sits on the doorstep of Furzedown Village with Tooting Railway & Broadway Underground stations nearby.

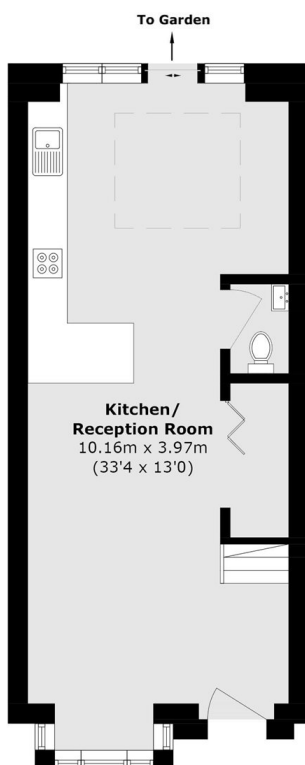
Features

- Three Bedrooms
- Large Garden
- Open-Plan Kitchen/Reception
- Off Street Parking
- ABC Roads
- Chain Free

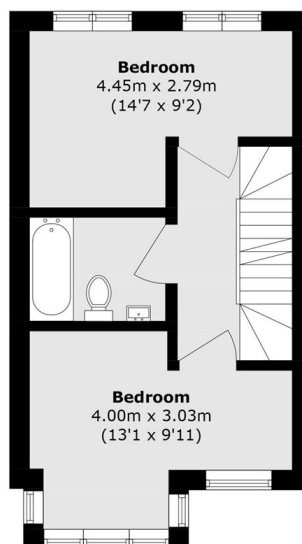
Seely Road, London, SW17



Second Floor



Ground Floor



First Floor

Total area (approx.): 79.6 sq. m (856.8 sq. ft)
(Excluding Eaves)

Dexters

Tooting
48 Tooting High Street
London
SW17 0RG
Sales
020 8545 8582

Energy Rating: C. We aim to make our particulars both accurate and reliable. However they are not guaranteed; nor do they form part of an offer or contract. If you require clarification on any points then please contact us, especially if you're traveling some distance to view. Please note that appliances and heating systems have not been tested and therefore no warranties can be given as to their good working order.

 **RICS** | Regulated
Estate Agent
and Letting Agent

[dexters.co.uk](https://www.dexters.co.uk)