



## Crockerton Road, SW17

### £475,000

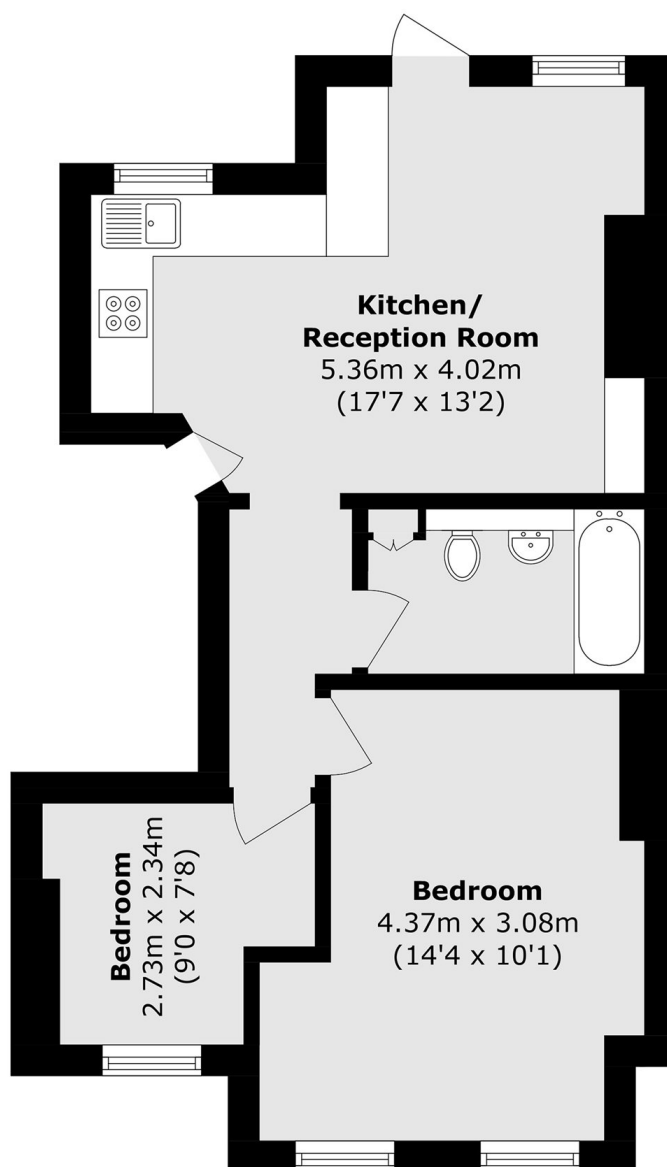
A charming and characterful two double bedroom apartment in this handsome double fronted Victorian building on a prime road in Tooting Bec. The property opens onto a superb open-plan kitchen/reception room with a fitted kitchen with solid wooden floors, two generous double bedrooms and a three piece bathroom.

Crockerton Road is a beautiful tree-lined residential street positioned moments away from Tooting Bec Underground station and the vast green open spaces of Wandsworth Common. The many shops, bars and restaurants of Bellevue Road and Balham and Tooting town centres are also nearby.

### Features

- Two Double Bedrooms
- Share of Freehold
- Period Features
- Chain Free
- Desirable Location
- Open-Plan Kitchen/Reception Room

# Crockerton Road, London, SW17



Total area (approx.): 46.6 sq. m (501.6 sq. ft)