



**Graveney Road, SW17**

**£925,000**

**Dexters**



## Graveney Road, SW17

A charming and lovingly maintained mid terrace home in the heart of Tooting spanning three floors with an exacting interior throughout composed of two reception rooms, a large eat-in stylish kitchen, three generous bedrooms and two bathrooms with a landscaped private garden.

With a handsome exterior the property opens onto a generous double reception room furnished with bespoke cabinetry and a comfortable seating area. The heart of the home lies at the rear with a stunning fitted kitchen complimented by wall and base units, solid worktops and fitted appliances with ample space for dining. The ground floor is further balanced with storage and a landscaped rear garden.

Over the first and top floors, there are three generous double bedrooms and two spacious three piece bathrooms.

Graveney Road is conveniently located for the bustling shops, bars and amenities of central Tooting with the infamous Tooting Market also on the doorstep. Excellent transport links of Tooting Broadway Underground tube station is also within walking distance.

### Features

- Period Freehold Home
- Desirable Location
- Three Double Bedrooms
- Two Bathrooms
- Double Reception Room
- Large Kitchen



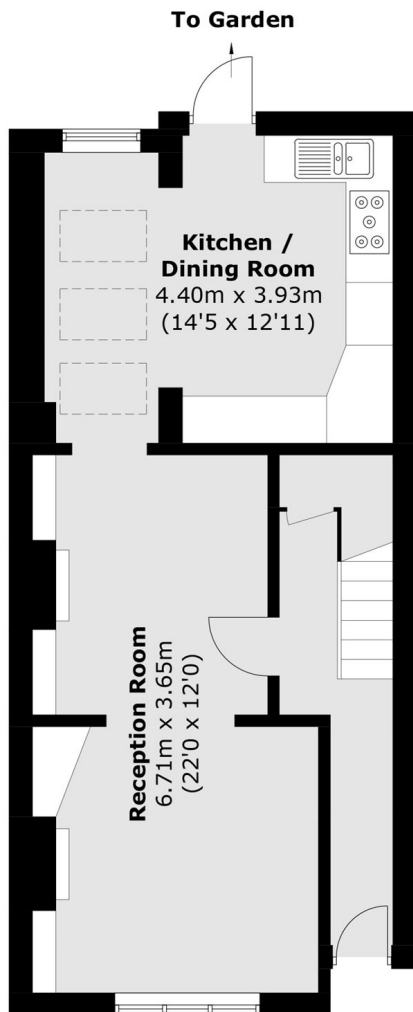




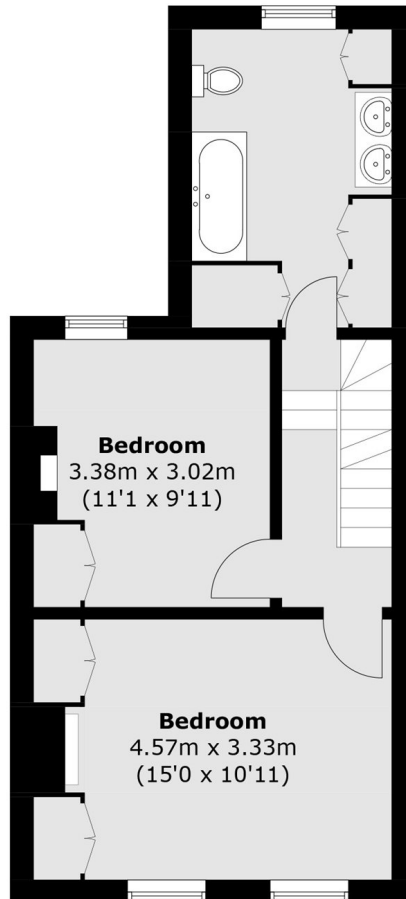




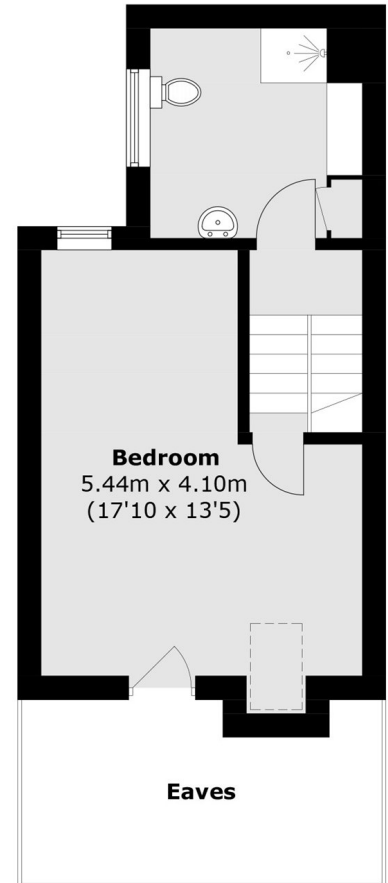
# Graveney Road, London, SW17



**Ground Floor**



**First Floor**



**Second Floor**

Total area (approx.): 121.1 sq. m (1,303.5 sq. ft)  
(Excluding Eaves)