



## Ashbourne Road, CR4

£2,100 Per calendar month

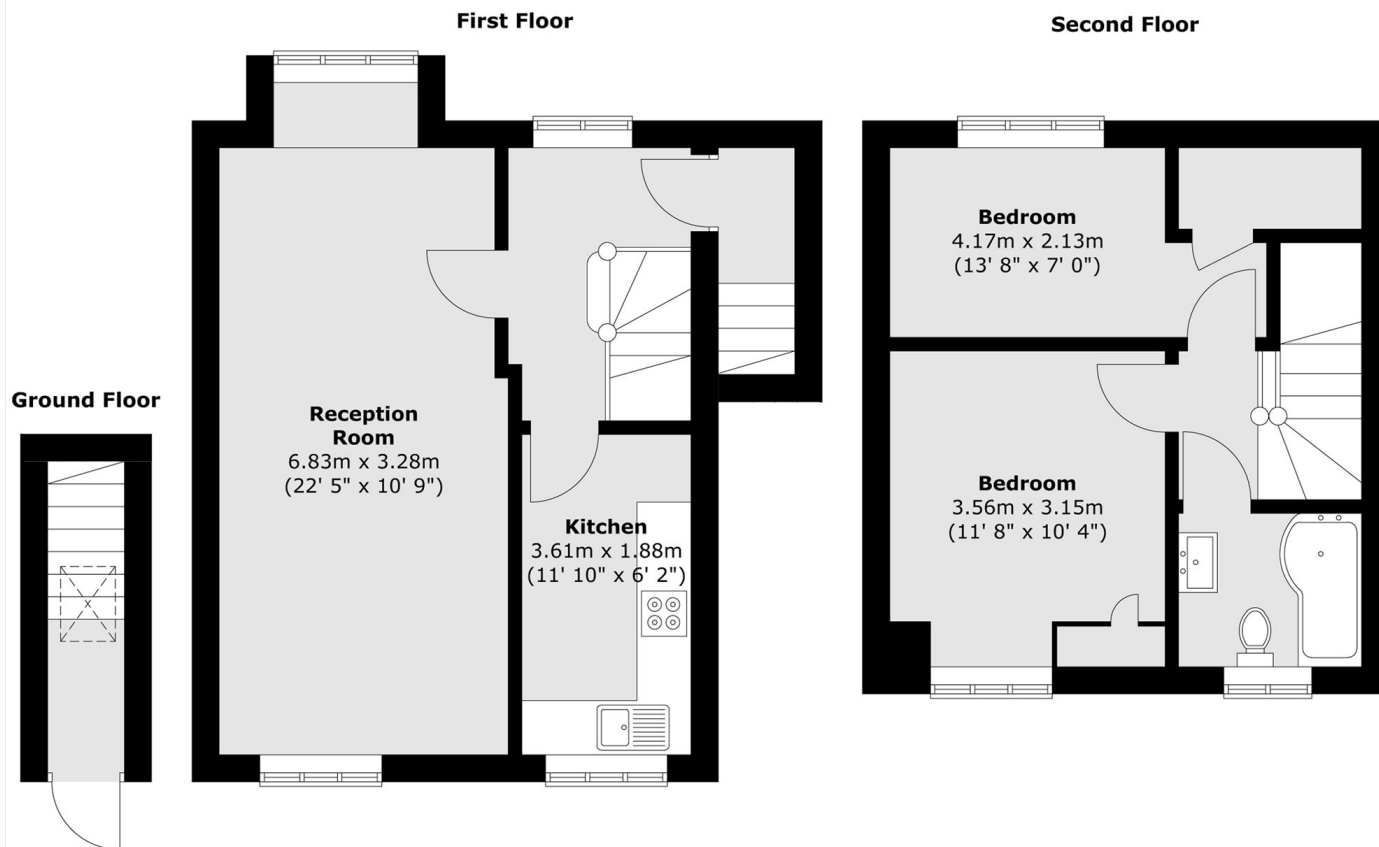
This large two double bedroom, split level maisonette has been neutrally decorated throughout. The property benefits from a separate kitchen, spacious living room and ample storage, making it perfect for professional sharers or couple.

Ashbourne Road is conveniently located for the many shops, bars and restaurants of central Tooting with the excellent transport links of Thameslink via Tooting Railway and Tooting Broadway Underground stations also within walking distance.

### Features

- Maisonette
- Two Double Bedrooms
- Large Living Room
- Separate Kitchen
- Split Level
- Ample Storage

# Ashbourne Road, Mitcham, CR4



Total area (approx.) : 74.2 sq. m (799 sq. ft)