



Park Avenue, CR4

£500,000

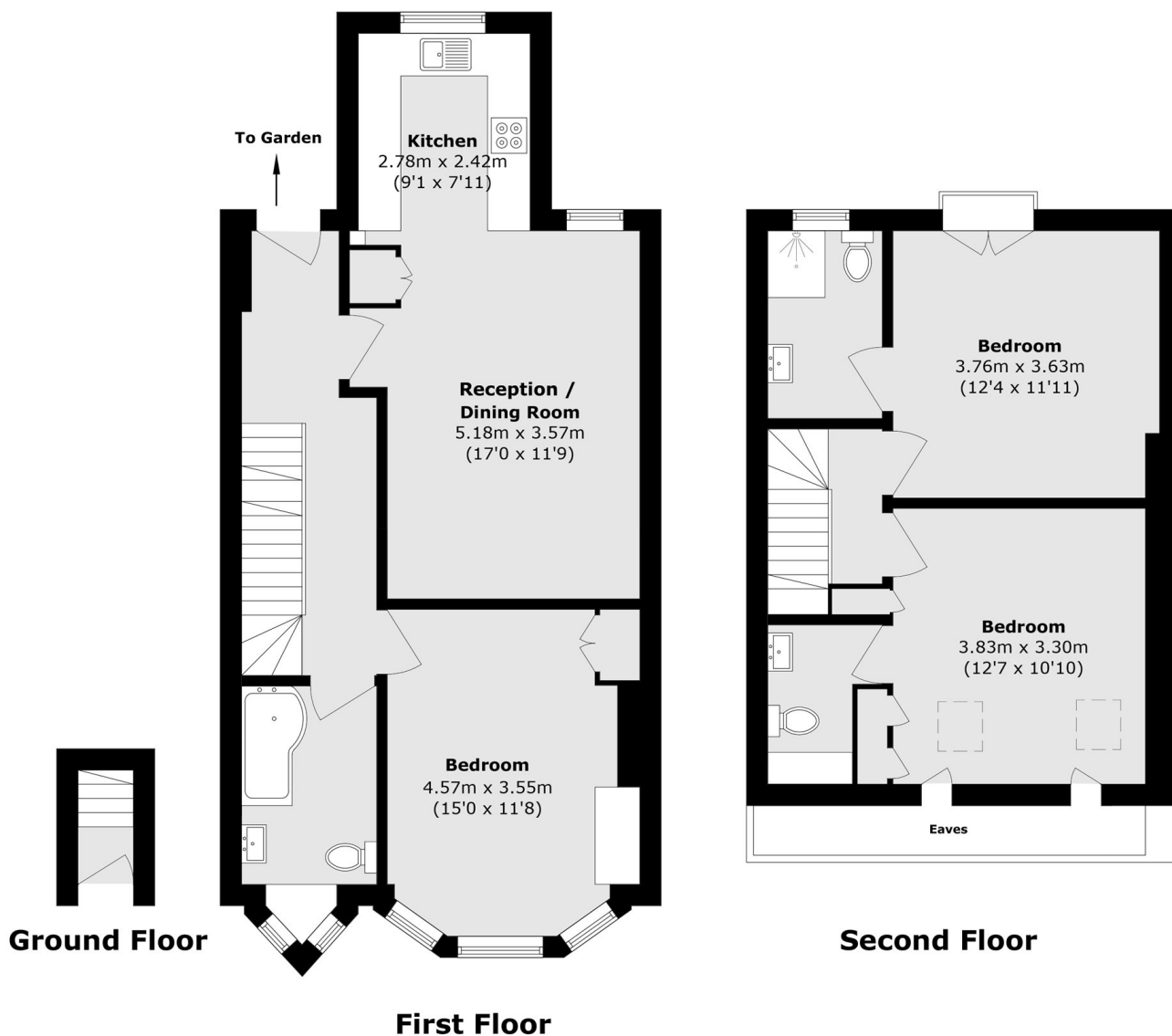
An immaculate split level apartment spanning to 1126 sqft with a stunning interior comprised of a large open-plan kitchen/reception room with ample space for dining, a front reception room/double bedroom with fitted cabinetry, two further double bedrooms and three bathroom with a large private garden to the rear.

Park Avenue is a residential road moments away from central Tooting and the vast amenities it has to offer within walking distance. The green open spaces of Figges Marsh and Tooting Railway station are also nearby.

Features

- Three Bedrooms
- Split Level
- Stunning Interior
- Three Bathrooms
- Open-Plan Kitchen
- Large Garden

Park Avenue, , CR4



Total area (approx.): 104.7 sq. m (1126.9 sq. ft)
(Excluding Eaves)