



Topsham Road, SW17

£925,000

Dexters



Topsham Road, SW17

A lovingly maintained and well arranged three/four bedroom freehold home in the heart of Tooting Bec with generous proportions over two floors comprising a large open-plan kitchen/reception room with ample space for dining, a stylish reception room with bespoke cabinetry and doors opening onto a private garden and great scope for extending via the loft (STPP).

With an inviting exterior, the property opens onto a spacious landing with a wonderfully practical open-plan kitchen/dining room with a fitted shaker kitchen taking centre stage. Furnished with solid worktops, wall and base units and fitted appliances it presents a comfortable dining and socialising space. To the rear, there is a large reception room with bespoke cabinetry and a bi-folding doors opening onto a landscaped garden.

The ground floor is further balanced with a front bedroom which doubles as a study with a downstairs w/c. Over the first floor, there are a three generous bedrooms and stylish three piece family bathroom.

Topsham Road is a quiet tree lined residential road in the heart of Tooting Bec with unmatched access to the vast shops, bars and amenities only a strong stroll away. The green open spaces of Tooting Bec Common and transport links of Tooting Bec Underground stations are a stones throw away.

Features

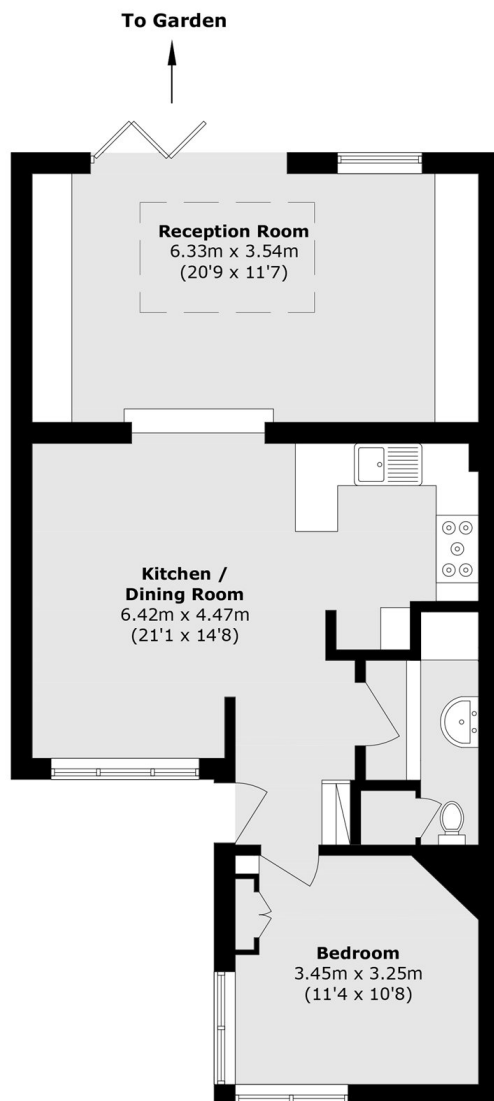
- Four Bedrooms/Study
- Fitted Kitchen
- Desirable Location
- Potential to Extend (STPP)
- Large Dining Area
- BiFolding Doors



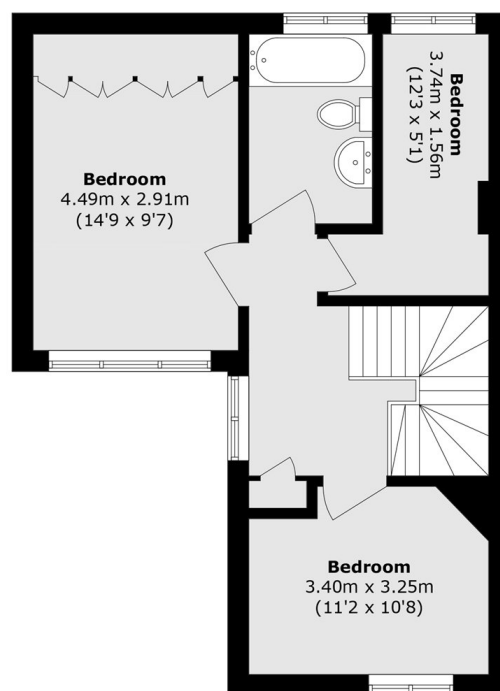




Topsham Road, London, SW17



Ground Floor



First Floor

Total area (approx.): 113.1 sq. m (1217.4 sq. ft)