



**Massingberd Way, SW17**

**£1,150,000**

**Dexters**



## Massingberd Way, SW17

A stunning three storey home in Heritage Park split over three floors with four generous double bedrooms, a large kitchen room with a sun room, a south facing garden, a front reception room, a garage and three bathrooms.

With a handsome exterior, the property has been lovingly maintained by the current owners and opens onto a front reception room/study with a stunning fitted kitchen at the rear furnished with wall and base units, a large breakfast island and integrated appliances. The kitchen provide an abundance of light and socialising space via the sun room and opens onto a large south facing garden.

Over the first and top floors, there are four generous double bedrooms, a large separate reception room and three bathrooms with the principal bedroom complimented by an en-suite.

Massingberd Way represents a close knit community of exclusive homes nestled away by Tooting Bec Common, with the vast amenities of Balham and Tooting town centres only a short walk away. Excellent transport links can be found via Tooting Bec Underground station.

### Features

- Stunning Home
- Four Bedrooms
- Three Bathrooms
- Large Landscaped Garden
- Garage
- Fitted Kitchen

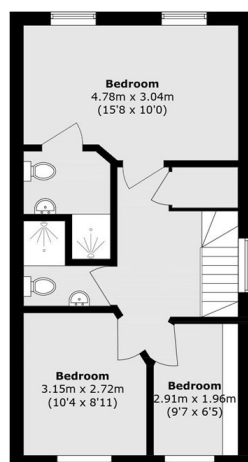




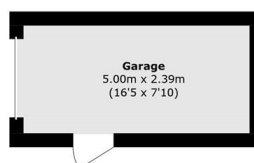




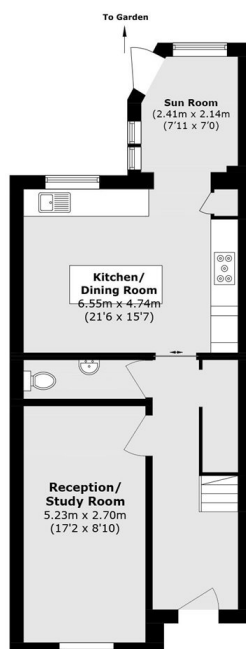
# Massingberd Way, London, SW17



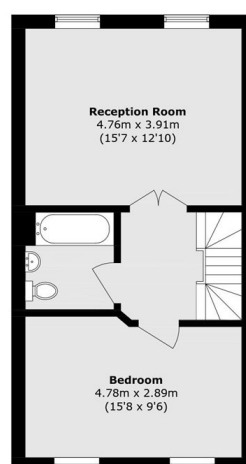
**Second Floor**



**Ground Floor**



**Ground Floor**



**First Floor**

Total area (approx.): 142.4 sq. m (1532.7 sq. ft)

Garage area (approx.): 11.9 sq. m (128.0 sq. ft)