



Longfield Street, SW18

£350,000

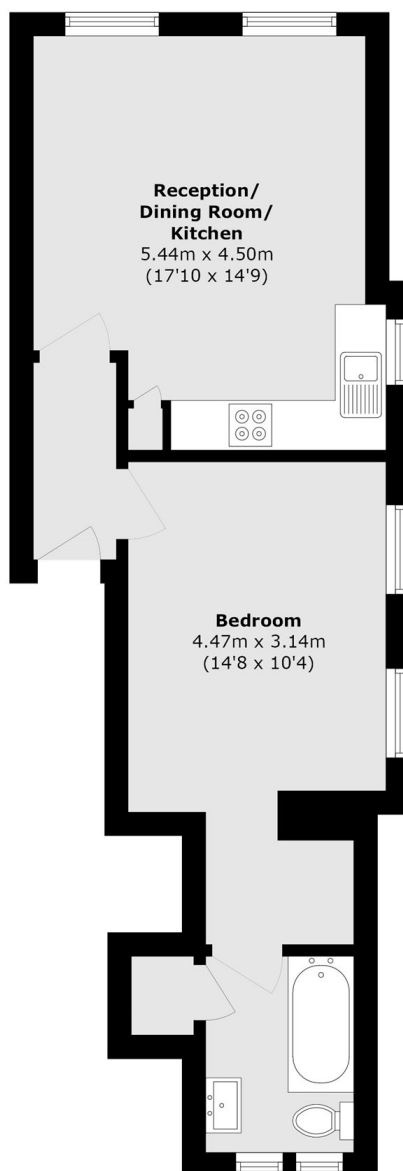
A stylish new build apartment with a stunning finish internally furnished with a superb open-plan kitchen/reception room, a large double bedroom and a three piece bathroom. The property is sold with a new lease.

Longfield Street is conveniently located for the many shops, bars and amenities of Southfield with Earlsfield town centre only moments walk away. Southfields Underground Stations is a stone's throw away with bus links also on the doorstep.

Features

- New Build
- One Bedroom Apartment
- Open-Plan Kitchen/Reception
- Stamp Duty Paid (STC)
- Desirable Location
- Chain Free

Longfield Street, LONDON, SW18



Total area (approx.): 48.8 sq. m (525.2 sq. ft)

Dexters

Tooting
48 Tooting High Street
London
SW17 0RG
Sales
020 8545 8582

Energy Rating: . We aim to make our particulars both accurate and reliable. However they are not guaranteed; nor do they form part of an offer or contract. If you require clarification on any points then please contact us, especially if you're traveling some distance to view. Please note that appliances and heating systems have not been tested and therefore no warranties can be given as to their good working order.

 **RICS** | Regulated
Estate Agent
and Letting Agent

[dexters.co.uk](https://www.dexters.co.uk)