



## Boundary Road, SW19

### £450,000

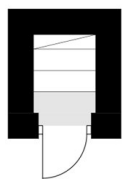
A charming two double bedroom split level apartment in the heart of Colliers Wood with a stunning interior comprising a large open-plan kitchen/reception room with a stylish fitted kitchen and comfortable seating area, two double bedrooms and two bathrooms.

Boundary Road is nestled away in the heart of Colliers Wood with the many shops, boutiques and cafes on the doorstep. The wide green open spaces of Wandle Park and excellent transport links of Colliers Wood Underground stations are within walking distance.

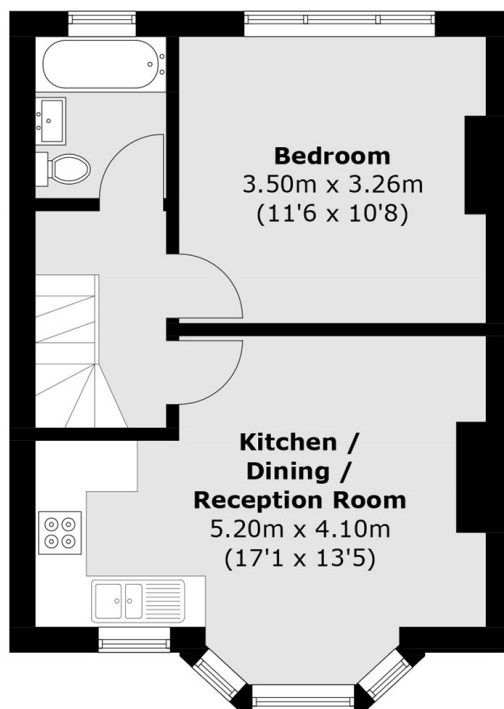
### Features

- Two Double Bedrooms
- Split Level
- Open Plan Kitchen/Reception Room
- Two Bathrooms
- Stunning Interior
- Desirable Location

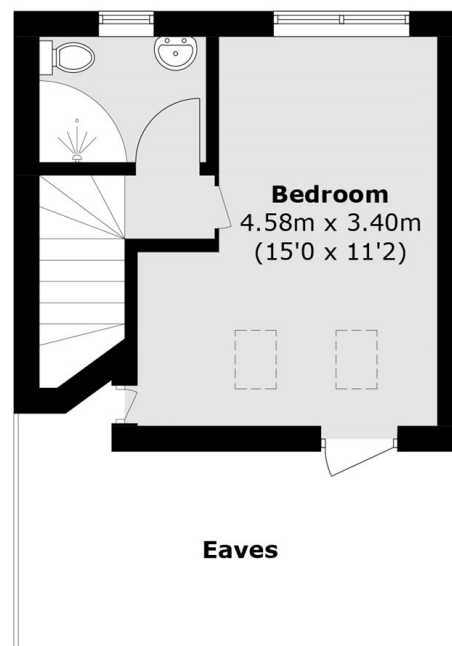
# Boundary Road, London, SW19



**Ground Floor**



**First Floor**



**Second Floor**

Total area (approx.): 59.7 sq. m (642.6 sq. ft)  
(Excluding Eaves)