



Greyhound Parade, SW17

£530,000

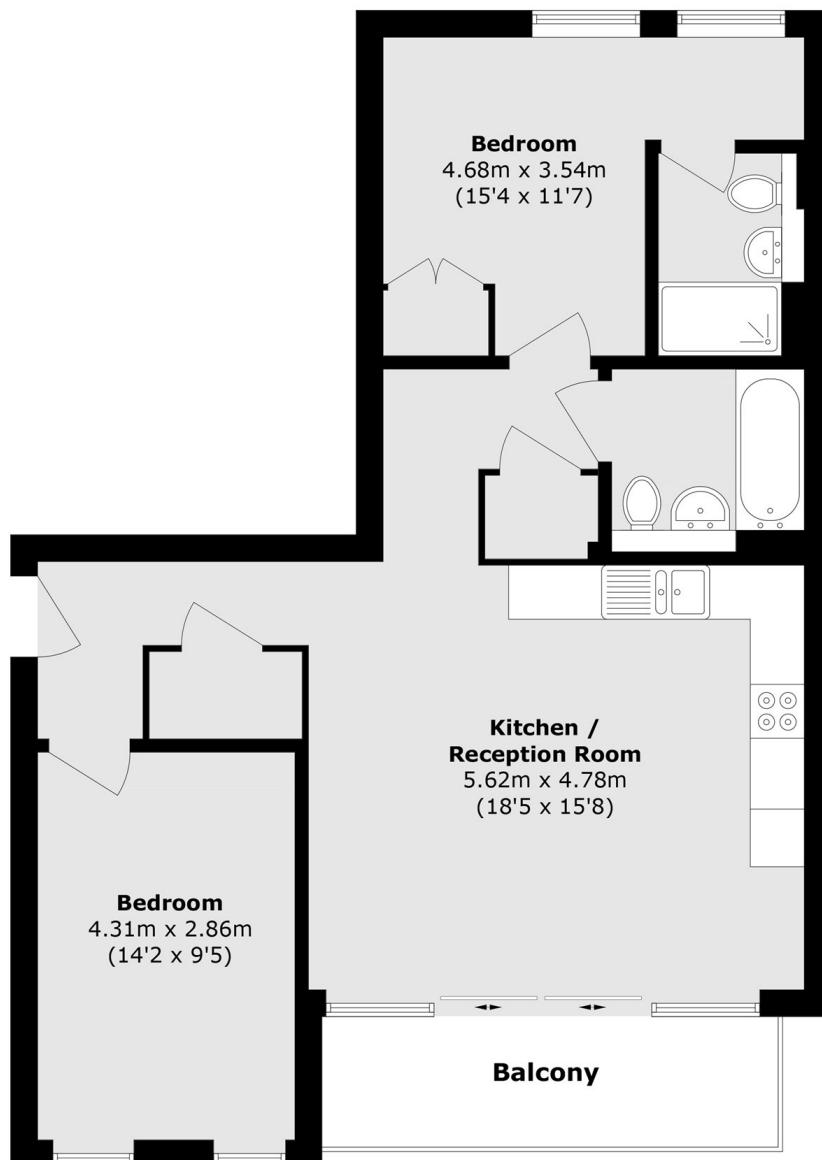
A stylish and well arranged two double bedroom two bathroom apartment with a stunning interior. The property opens onto a generous open-plan kitchen/ reception room with sliding doors leading onto a private balcony and two bathrooms. Sold chain free, the property also benefits from a private parking space.

Ideally located within close proximity to Wimbledon, Tooting and Earlsfield town centres and their vast amenities, the property is well located for an eclectic mix of shops, bars and restaurants as well as the excellent transport links via Earlsfield & Tooting Broadway stations.

Features

- Two Double Bedrooms
- Two Bathrooms
- Large Balcony
- Private Parking Space
- Desirable Location
- 999 Year Lease

Greyhound Parade, London, SW17



Total area (approx.): 72.6 sq. m (781.4 sq. ft)
Balcony area (approx.): 7.3 sq. m (78.5 sq. ft)