

Longfield Street, SW18

£325,000

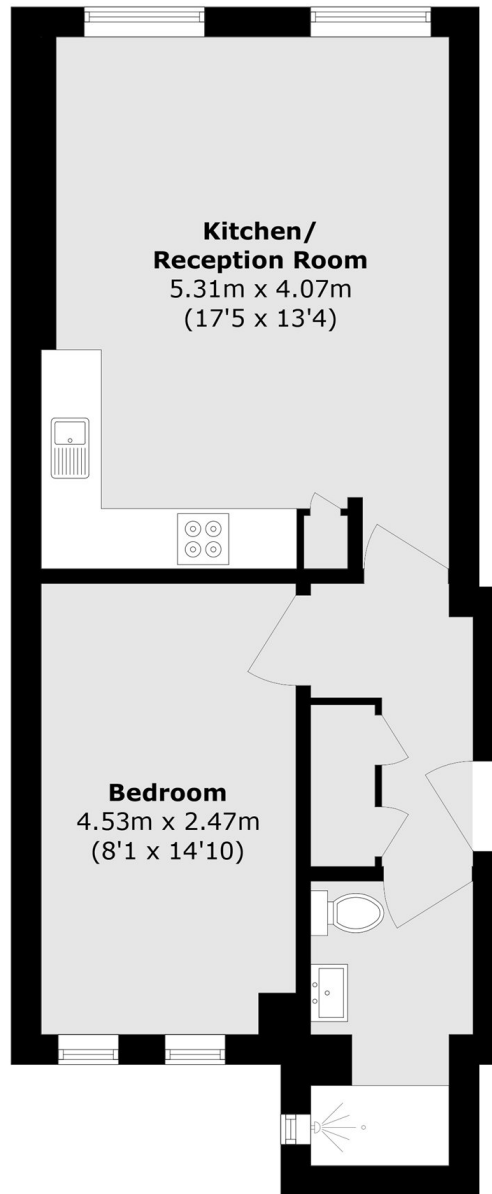
A stylish new build apartment with a stunning finish internally furnished with a superb open-plan kitchen/reception room, a large double bedroom and a three piece bathroom. The property is sold with a new lease.

Longfield Street is conveniently located for the many shops, bars and amenities of Southfield with Earlsfield town centre only moments walk away. Southfields Underground Stations is a stone's throw away with bus links also on the doorstep.

Features

- New Build
- One Bedroom Apartment
- Open-Plan Kitchen/Reception
- Desirable Location
- Chain Free

Longfield Street, LONDON, SW18



Total area (approx.): 43.3 sq. m (466.0 sq. ft)