



Letchworth Street, SW17

£3,800 Per calendar month

This four bedroom house benefits from a spacious reception room, large eat-in kitchen and private garden. Ideal for four professional sharers.

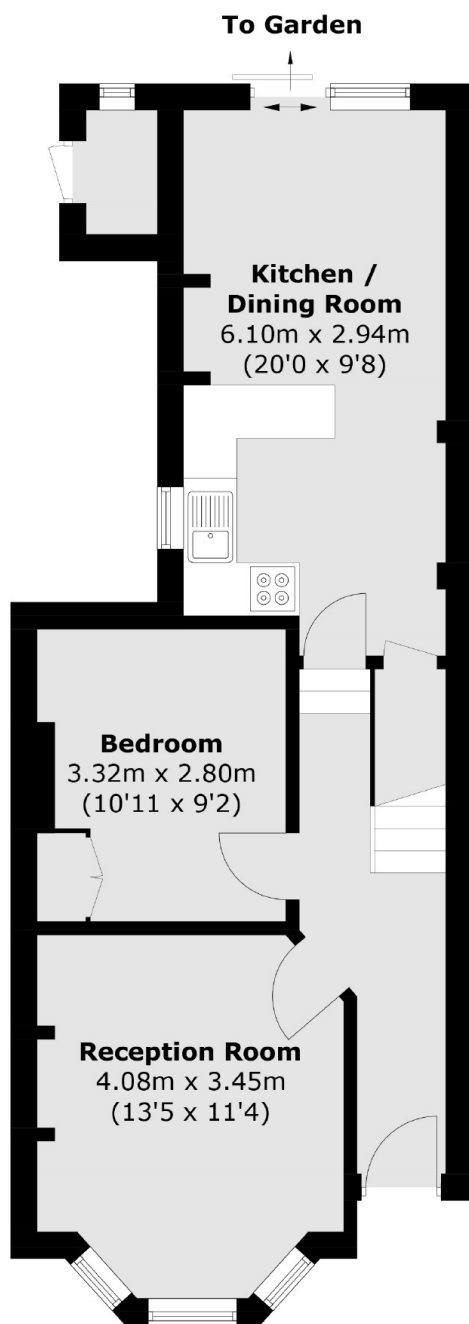
Letchworth Street is conveniently located for both Tooting Bec and Tooting Broadway tube stations. Tooting High Street with its vast array of restaurants and cafes at the end of the Road as well as the beautiful open spaces of Tooting Bec Common.

Features

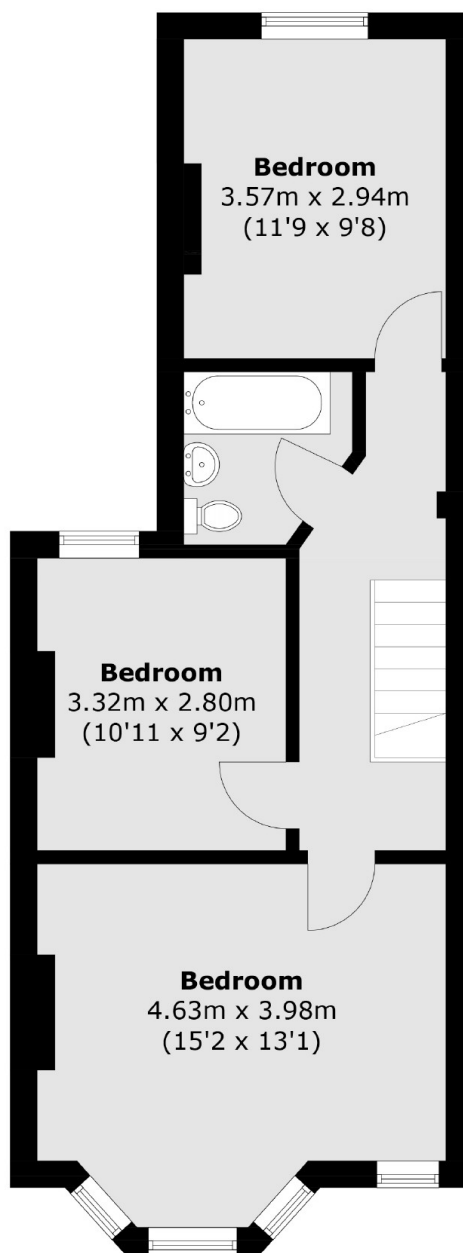
Four Double Bedrooms
Separate Reception
Eat-in Kitchen

Private Garden
Prime Location

Letchworth Street, London, SW17



Ground Floor



First Floor

Total area (approx.): 99.5 sq. m (1,071.0 sq. ft)
External Store : 1.2 sq. m (12.9 sq. ft)