



## Longley Road, SW17

£649,000

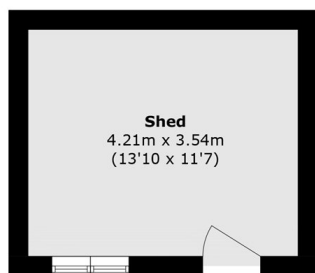
A spacious and beautifully presented three double bedroom split-level flat set over the first and second floor of this charming Victorian building with a footprint that extends to approx 1,124 sqft comprising of a spacious front reception room, a separate kitchen, three double bedrooms, two bathrooms and a large private garden. The property also offers further opportunity to extend (STPP).

Longley Road is a conveniently located residential street with excellent access to the many shops, bars and restaurants of central Tooting, with easy access to Tooting Railway and Tooting Broadway Underground stations.

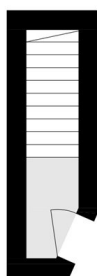
### Features

- Three Double Bedrooms
- Two Bathrooms
- Spacious Private Garden
- Large Reception Room
- Share of Freehold
- EPC Rating C

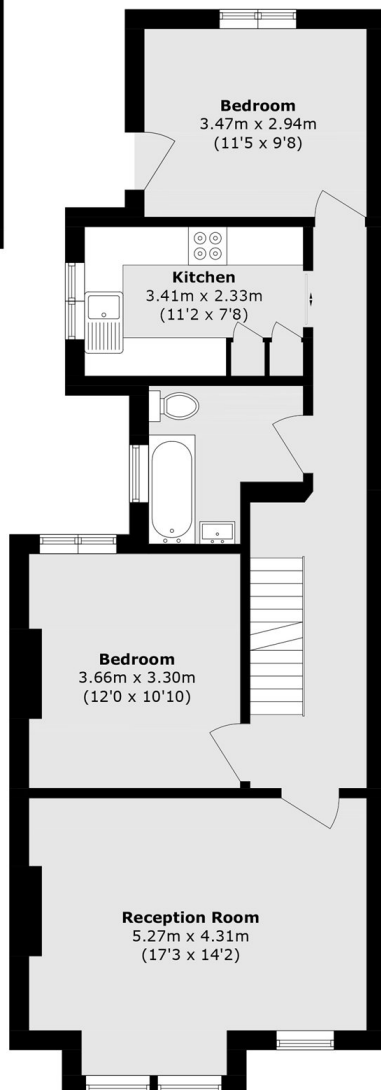
# Longley Road, London, SW17



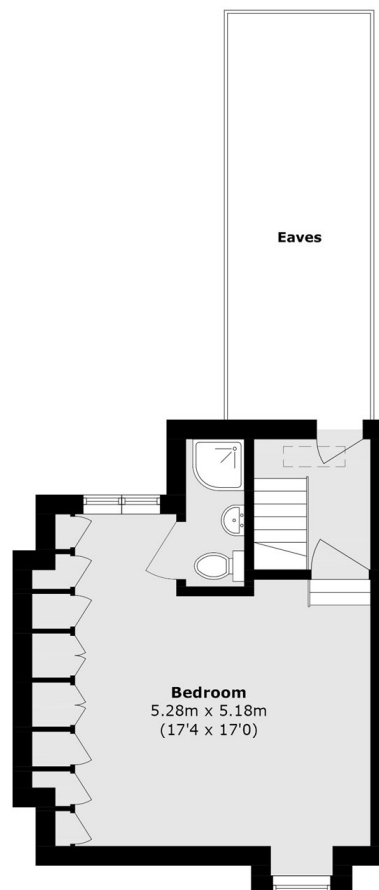
**Outbuilding**



**Ground Floor**



**First Floor**



**Second Floor**

Total area (approx.): 104.5 sq. m (1124.8 sq. ft)  
(Excluding Eaves)  
Outbuilding area (approx.): 14.9 sq. m (160.3 sq. ft)