



## Woodbury Street, SW17

£550,000

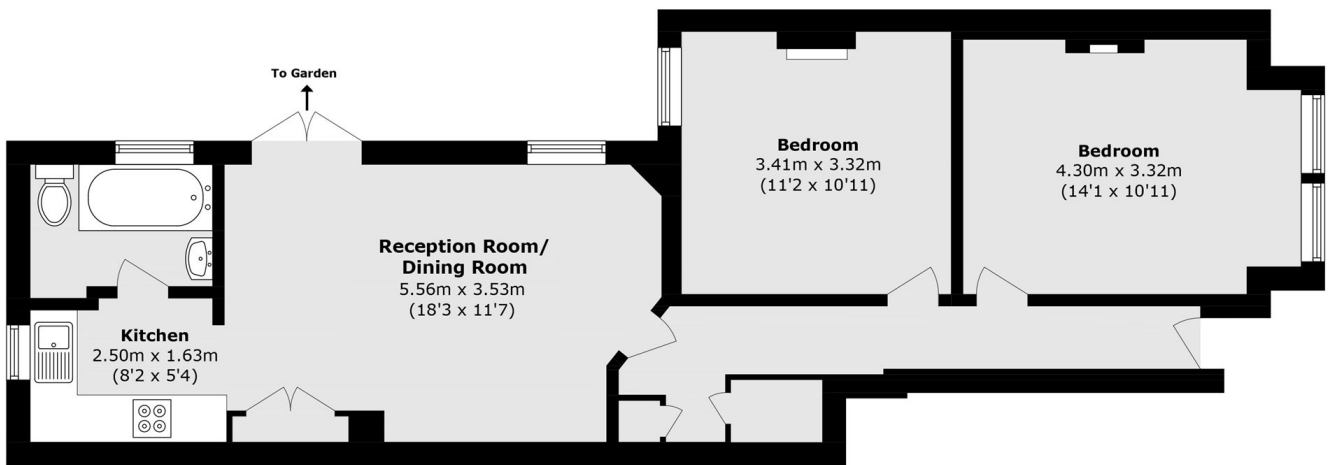
A charming and well positioned two double bedroom maisonette set over the ground floor of this Victorian building in the heart of Tooting with accommodation that spans to just shy of 700 sqft comprising a generous reception room, private garden, two double bedrooms and a large family bathroom.

Woodbury Street is enviably located for the many shops, bars and restaurants of Central Tooting with Tooting Market only a short stroll away. The many transport links and access points for the City can be found via Tooting Broadway Underground and Tooting Railway stations.

### Features

- Two Double Bedrooms
- Own Front Door
- Private Garden
- Healthy Lease
- Desirable Location
- Large Reception Room

# Woodbury Street, London, SW17



Total area (approx.): 62.8 sq. m (676.0 sq. ft)