



Cowick Road, SW17

£565,000

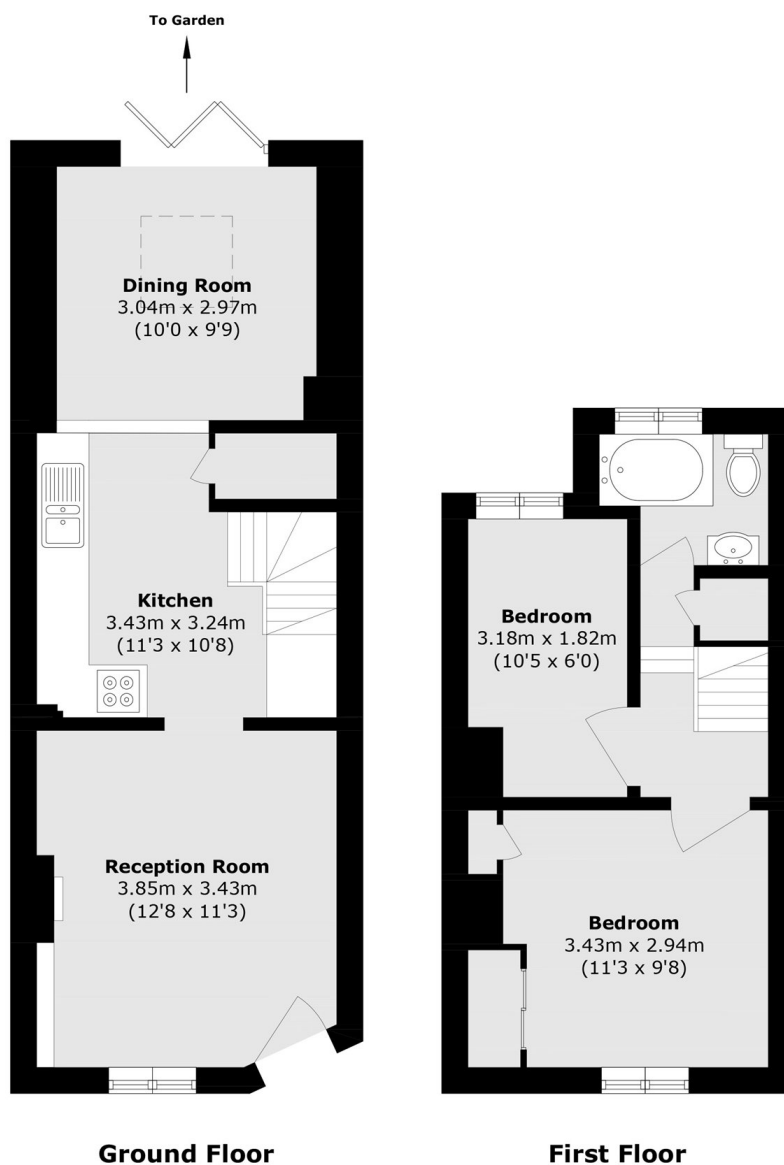
A charming and well arranged mid terrace period home in the highly desirable Totterdown Conservation area with a large footprint opening onto a front reception room, a large fitted kitchen with wall and base units and ample space for dining opening onto a private rear garden. Over the first floor, the property has two generous double bedrooms and a three piece bathroom.

Cowick Road is situated close to many local shops, bars and restaurants as well as the green spaces of both Wandsworth and Tooting Bec Commons. Tooting Broadway and Bec Underground stations are also a stones throw away.

Features

- Two Double Bedrooms
- Fitted Kitchen
- Front Reception Room
- Three Piece Bathroom
- Private Garden
- Totterdown Conservation Area

Cowick Road, London, SW17



Total area (approx.): 58.4 sq. m (628.6 sq. ft)