



Vant Road, SW17

£415,000

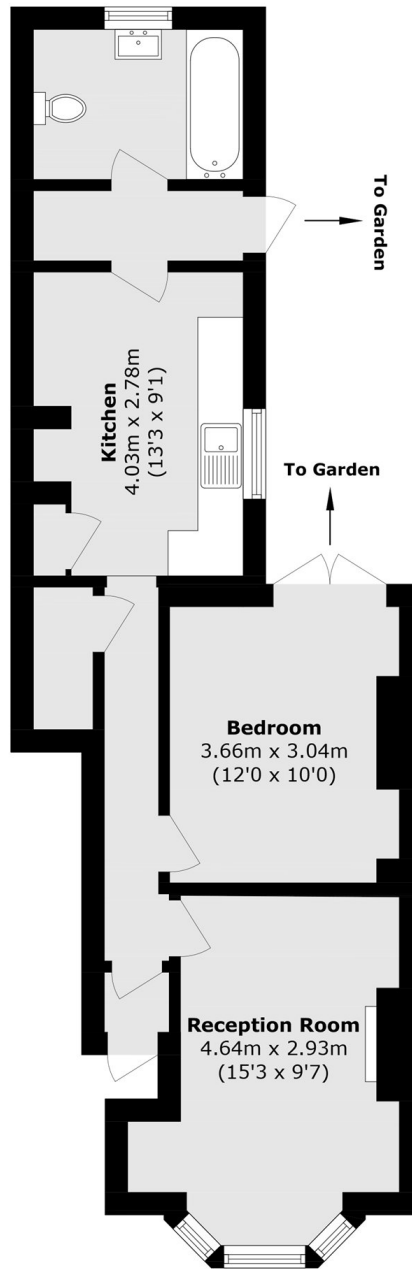
A charming and well positioned ground floor apartment moments away from central Tooting with a generous front reception room, a stylish eat-in kitchen, a large double bedroom and a garden.

Vant Road is a residential street conveniently located for the many shops, bars and restaurants of central Tooting and a short step from the highly sought after Sellincourt Primary School. Tooting Broadway Underground and Tooting Railway stations are also within equidistant proximity.

Features

- One Double Bedroom
- Period Building
- Front Reception Room
- Stylish Kitchen
- Central Location
- Large Double Bedroom

Vant Road, London, SW17



Total area (approx.): 53.1 sq. m (571.5 sq. ft)