



Bickersteth Road, SW17

£895,000

Dexters



Bickersteth Road, SW17

A beautiful example of a period home in the heart of Tooting spanning three floors with an immaculate interior comprising a double reception room, a stunning eat-in kitchen with solid worktops, three double bedrooms, a newly fitted bathroom and a private garden.

With a handsome and inviting exterior, the property welcomes you in via a charming double reception room with ample space for seating and dining furnished with bespoke cabinetry and a comfortable seating area. The heart of the home sits at the rear with a stylish kitchen taking centre stage with wall and base units, solid worktops and fitted appliances with doors opening onto a landscaped rear garden.

A well balanced ground floor with a w/c and further storage compliments three double bedrooms and a stylish four piece family bathroom over the first and top floors with further scope for extending (STPP).

Bickersteth Road represents a close knit community of homes moments away from central Tooting with the vast shops, bars and eateries on the doorstep. The excellent transport links of Tooting Railway and Tooting Broadway underground stations is also nearby.

Features

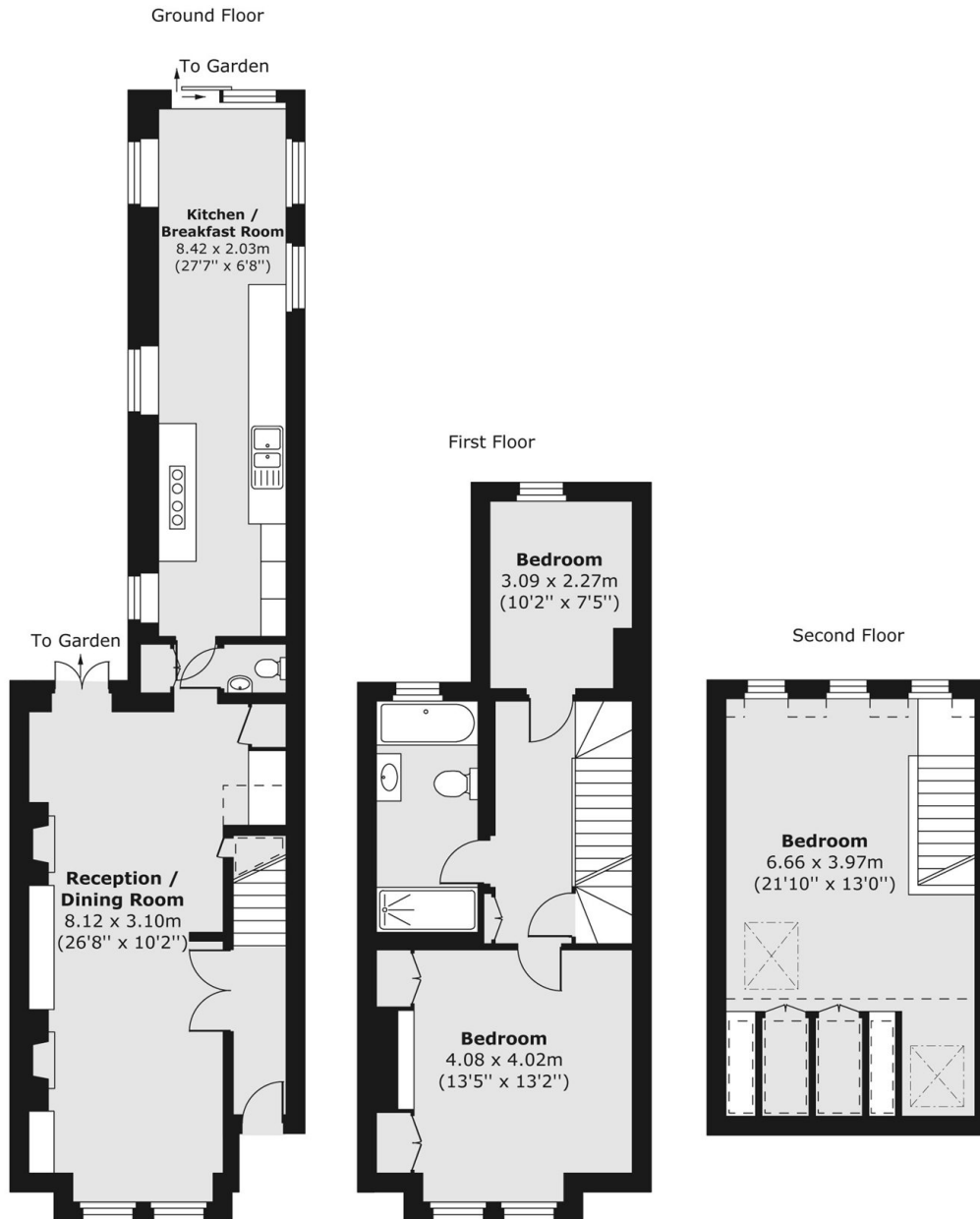
- Three Bedrooms
- Chain Free
- Double Reception Room
- Landscaped Garden
- Immaculate Interior
- Period Features







Bickersteth Road, London, SW17



Total area (approx.) 116.71 sq. m (1,256 sq. ft)