



Lessingham Avenue, SW17

£669,950

A charming and well presented two bedroom home in the highly desirable Totterdown Conservation area with accommodation comprising a large reception room, an extended kitchen with doors opening onto a private garden, two double bedrooms and a three piece family bathroom.

Lessingham Avenue is a quiet tree lined residential street nestled moments away from the green open spaces of Tooting Bec Common and the many shops, bars and restaurants of Tooting High Street with easy access to bus links and both Tooting Bec & Broadway Underground stations.

Features

- Two Bedrooms
- Chain Free
- Extended Home
- Desirable Location
- BiFolding Doors
- Private Garden



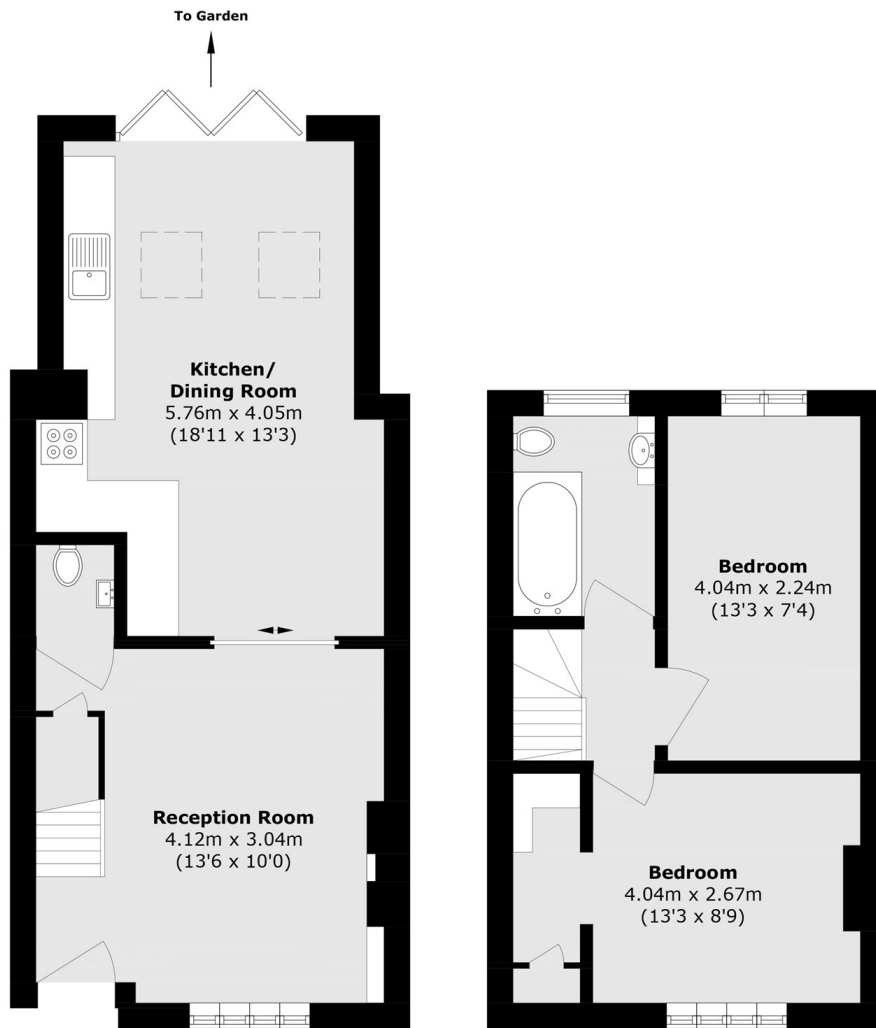
Lessingham Avenue, SW17

Having been lovingly maintained and extended by the current owners, the property opens onto a comfortable and well arranged reception room with doors leading to a stylish and well equipped kitchen furnished with wall and base units, ample worktop space and bi-folding doors opening onto a private rear garden. The ground floor is further balanced with a separate w/c.

Over the first floor, there are two generous double bedrooms and a three piece family bathroom with the principal bedroom complimented by a walk-in dressing area.



Lessingham Avenue, London, SW17



Ground Floor

First Floor

Total area (approx.): 65.8 sq. m (708.3 sq. ft)