



Totterdown Street, SW17

£975,000

Dexters



Totterdown Street, SW17

A sublime mid terrace period home in the heart of Tooting with an immaculate interior that has been lovingly extended by the current owners spanning two storeys with three bedrooms, a stunning open-plan kitchen/reception room with a private garden and further scope for extending.

With a handsome and inviting exterior, the property opens onto a charming front reception room furnished with bespoke cabinetry, plantation shutters, solid floors and a feature fireplace. The heart of the home lies at the rear with stunning kitchen taking centre stage. Furnished with wall and base units, a breakfast bar, solid worktops, an integral utility room and w/c, the space is unmatched for hosting with slimline full width sliding doors opening onto a private garden.

Over the first floor, there are three generous double bedrooms and a three piece family bathroom with further scope to extend via the loft (STPP).

Totterdown Street is positioned just off the vibrant high street of Tooting, with its wide array of bars and restaurants on the doorstep. The excellent transport links of Tooting Broadway tube station and Tooting overground are only a short distance away with quick access into Central London.

Features

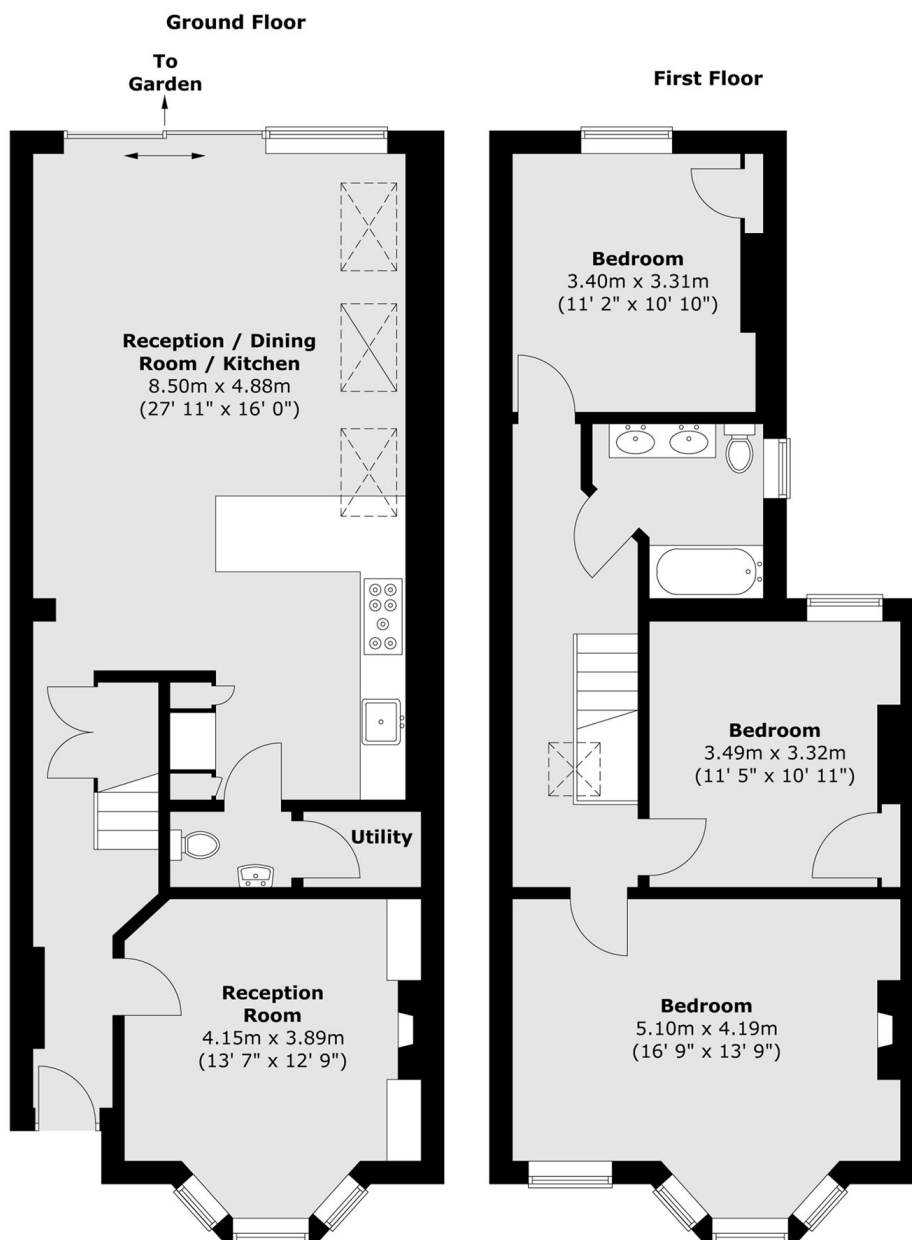
- Three Double Bedrooms
- Stunning Kitchen
- Private Garden
- Immaculate Interior
- Loft Extension Potential (STPP)
- Front Reception Room







Totterdown Street, London, SW17



Total area (approx.) : 124.7 sq. m (1342 sq. ft)