



Rostella Road, SW17

£695,000

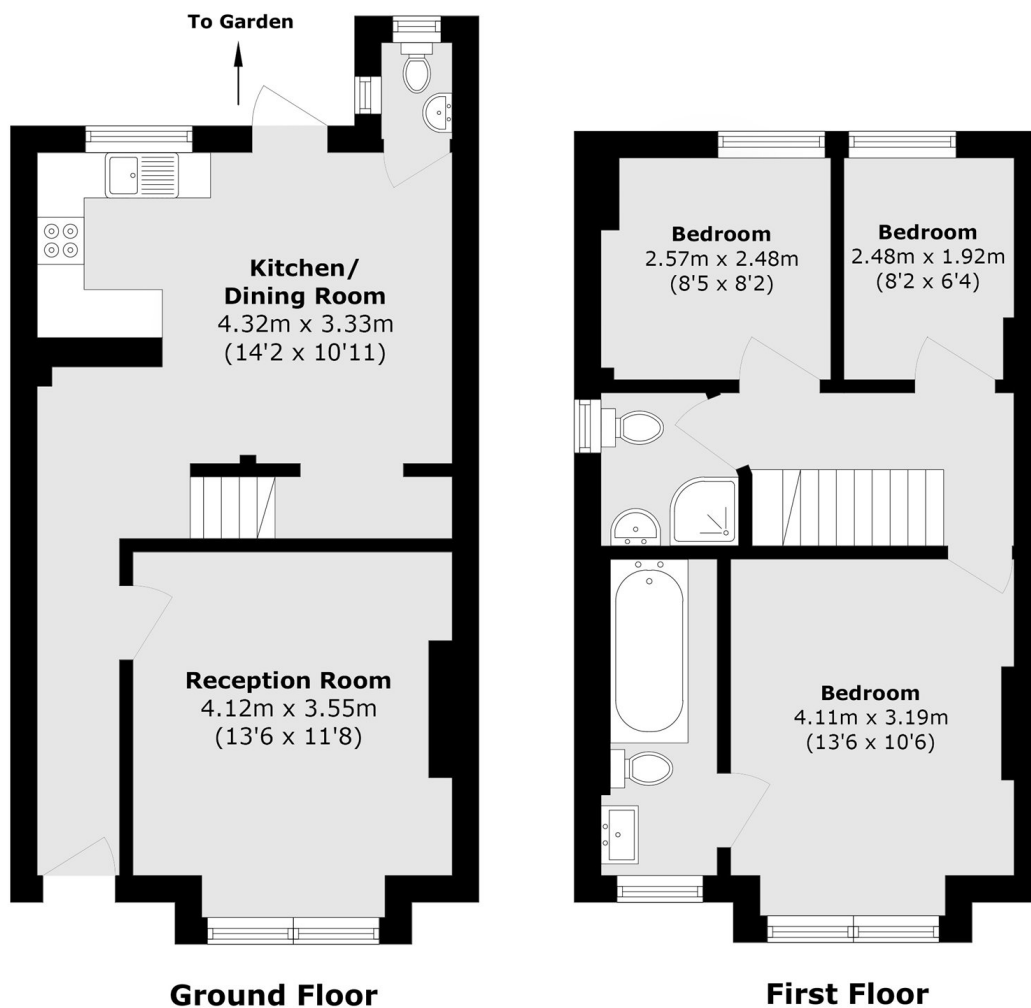
A stunning three bedroom home in the heart of Tooting with a generous footprint composed of a front reception room, a large kitchen with ample space for dining, a garden and two bathrooms. The property has huge scope for further alterations and extension potential (STPP).

Rostella Road is situated within a popular grid of roads providing easy access to the many shops, bars and restaurants of Tooting, Earsfield and Wimbledon Town Centres, with the excellent transport links of Tooting Broadway underground station also a short walk away.

Features

- Freehold Home
- Potential to Extend (STPP)
- Charming Interior
- Two Bathrooms
- Three Bedrooms
- Large Garden

Rostella Road, London, SW17



Total area (approx.): 77.5 sq. m (834.2 sq. ft)