



Alston Road, SW17

£1,075,000

Dexters



Alston Road, SW17

A superb and truly stunning home that has been meticulously refurbished and is a testament to sophisticated living with a balanced layout split over three floors. Furnished with four bedrooms and an immaculate interior, the property includes a front reception room, a beautiful open-plan kitchen/dining room, a landscaped garden and three bathrooms and a w/c.

Boasting a handsome and inviting exterior, this beautifully presented home opens into an elegant reception room, complete with an original marble fireplace and ample space for comfortable seating. To the rear, a superb open-plan kitchen, dining and living area forms the heart of the home. The bespoke fitted kitchen features a range of wall and base units, solid worktops and integrated appliances, while exposed brickwork adds warmth and character with bi-fold doors opening onto a beautifully landscaped rear garden with a secluded seating area, ideal for entertaining.

Over the first and top floors, there are four bedrooms and three bathrooms and ample storage space throughout.

Alston Road is situated within a popular grid of roads providing easy access to the many shops, bars and restaurants of Tooting, Earsfield and Wimbledon Town Centres, with the excellent transport links of Tooting Broadway underground station also a short walk away.

Features

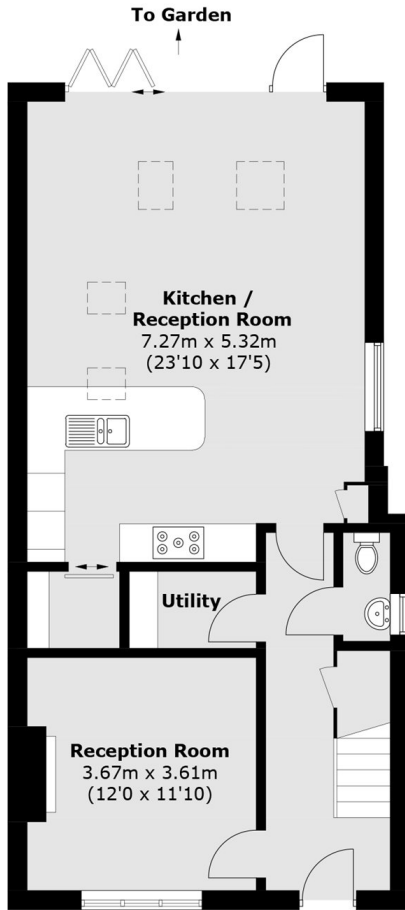
- Four Bedrooms
- Immaculate Interior
- Landscaped Garden
- Open Plan Kitchen/Dining Room
- Front Reception Room



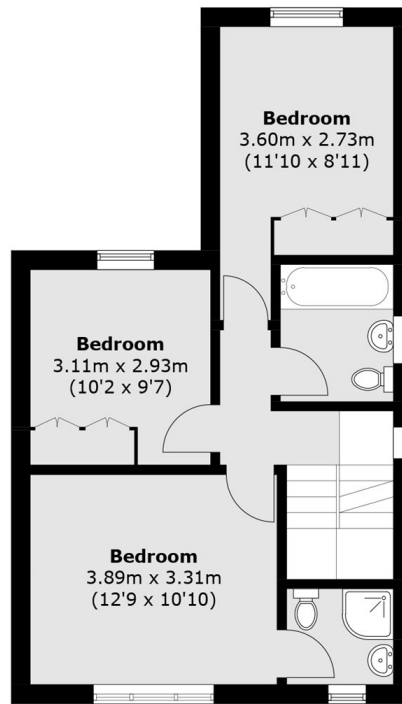




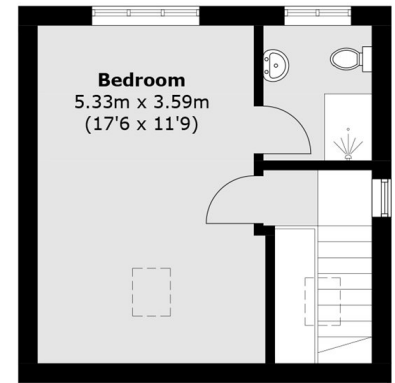
Alston Road, London, SW17



Ground Floor



First Floor



Second Floor

Total area (approx.): 145.2 sq. m (1,563.0 sq. ft)