



Silbury Avenue, CR4

£1,250 Per calendar month

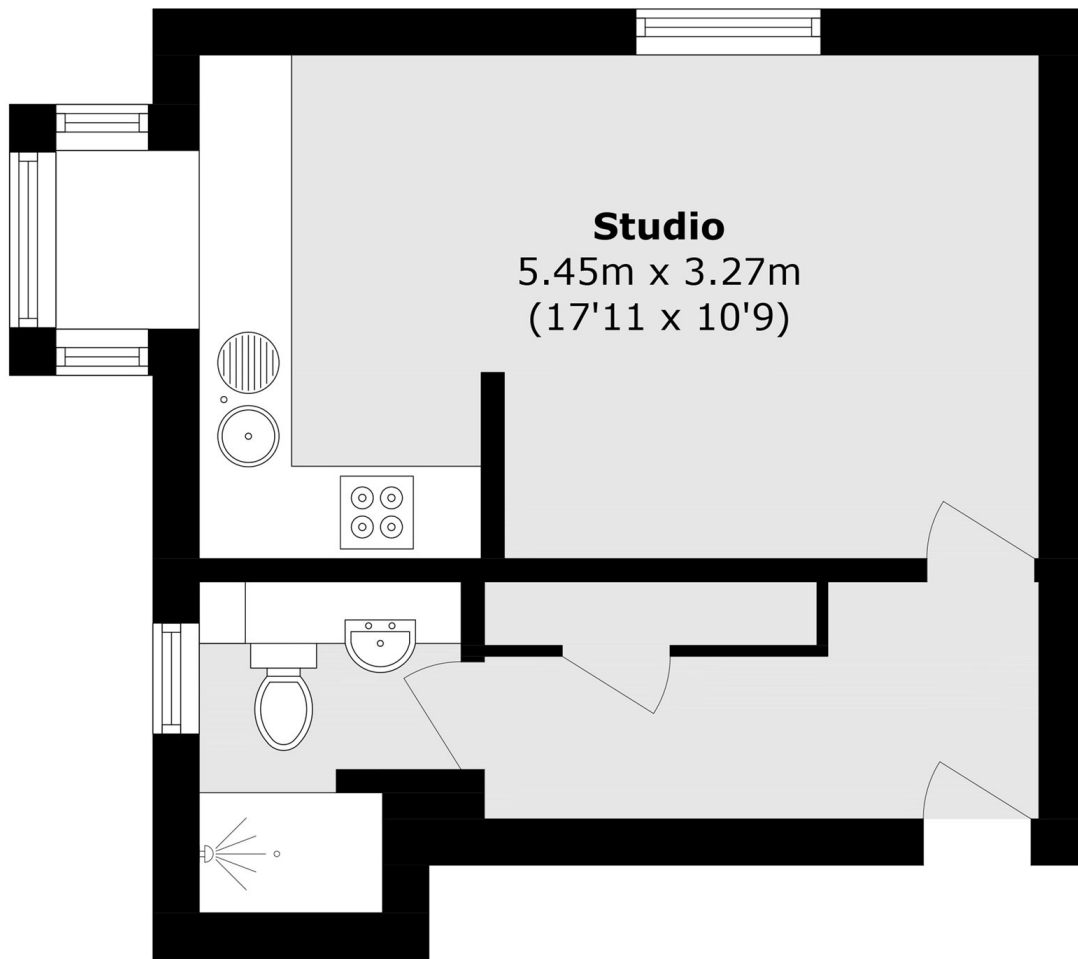
This first floor studio has been neutrally decorated throughout. The property benefits from a large kitchen, tiled bathroom and ample storage, making it perfect for a single professional or couple.

Silbury Avenue is situated within a quiet residential development. The property is within walking distance of Colliers Wood Station with access to the Northern Line as well as a great choice of bus routes.

Features

- Purpose Built
- Studio
- Neutrally Decorated
- Separate Bathroom
- Ample Storage
- Allocated Parking

Silbury Avenue, Mitcham, CR4



Total area (approx.): 28.8 sq. m (310.0 sq. ft)