



## Vant Road, SW17

£2,700 Per calendar month

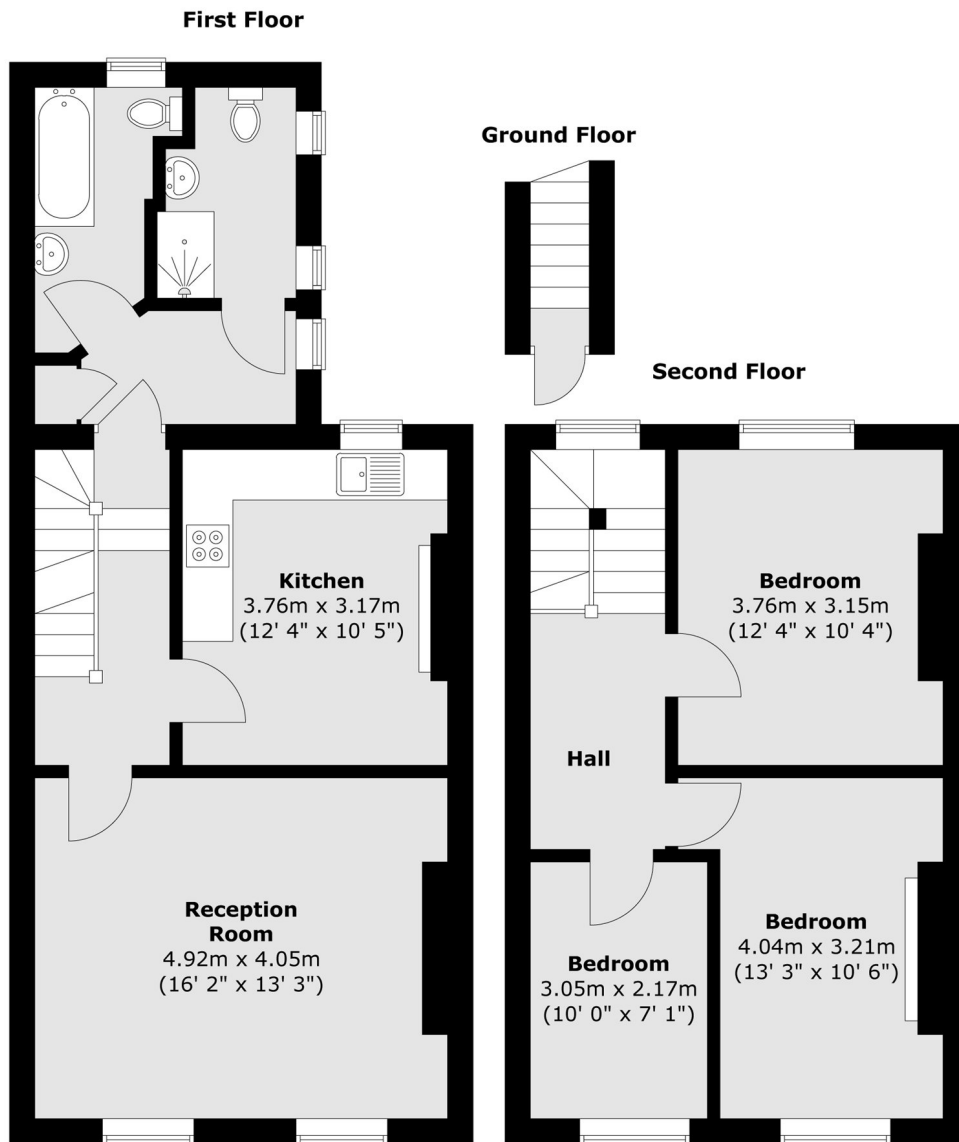
FAMILY OR TWO SHARERS ONLY. A first floor flat boasting high ceilings and period features with a modern eat-in kitchen, three double bedrooms and two bathrooms.

Vant Road is a quiet residential street in central Tooting with many shops, bars and restaurants within a short walk. The many transport links of Tooting Broadway Underground and Tooting Railway stations are also within walking distance.

### Features

- First Floor Flat
- Three Double Bedrooms
- Separate Reception
- Eat In Kitchen
- Two Bathrooms
- Period Features

# Vant Road, London, SW17



Total area (approx.) : 92.7 sq. m (998 sq. ft)