

Frank Harris & Co.



King's Cross, N1

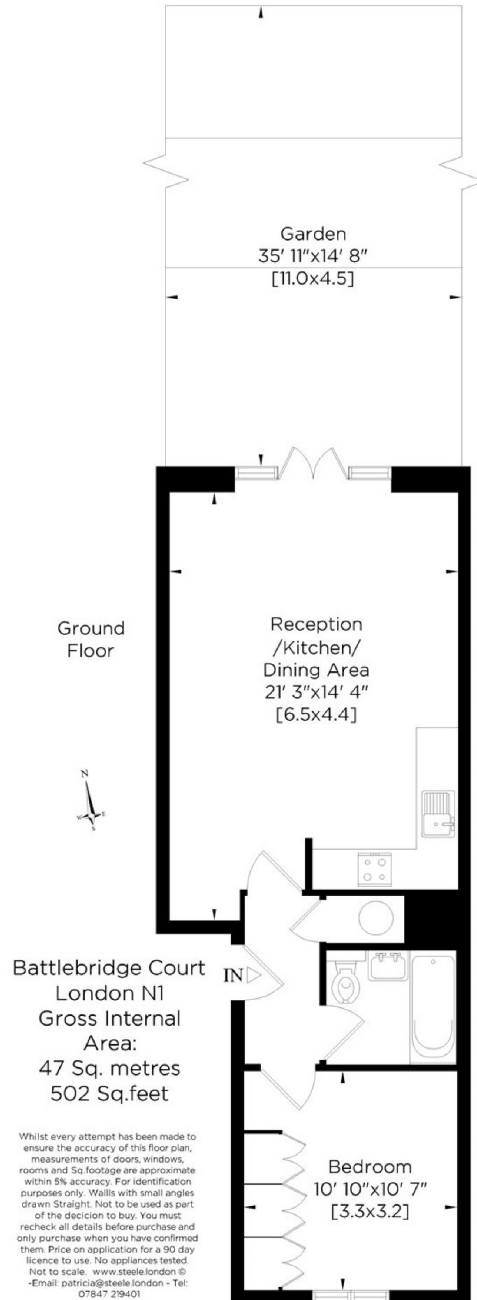
£553 Per week

A beautifully presented one-bedroom garden flat featuring a spacious open-plan kitchen, dining and living area. The property boasts a sleek, high-specification bathroom and a generously sized double bedroom with ample built-in storage. Highlights include elegant wooden flooring, a large private garden, and a charming outdoor patio with a dedicated BBQ area, perfect for entertaining or relaxing.

Battlebridge Court is located on Wharfedale Road, a third of a mile from both King's Cross & St Pancras stations. Local bars, restaurants and cafés can be found nearby on Caledonian Road and Pancras Square.

- Open-plan Living • Modern Bathroom • Double Bedroom •
- Wooden Flooring • Private Garden • BBQ Patio •

Frank Harris & Co.



Frank Harris & Co. Bloomsbury and Kings Cross
81 Marchmont Street, London,
WC1N 1AL
020 7387 0077
bloomsburylettings@frankharris.co.uk

Energy Rating: C. We aim to make our particulars both accurate and reliable. However they are not guaranteed; nor do they form part of an offer or contract. If you require clarification on any points then please contact us, especially if you're traveling some distance to view. Please note that appliances and heating systems have not been tested and therefore no warranties can be given as to their good working order.

