

Frank Harris & Co.



Bloomsbury, WC1H

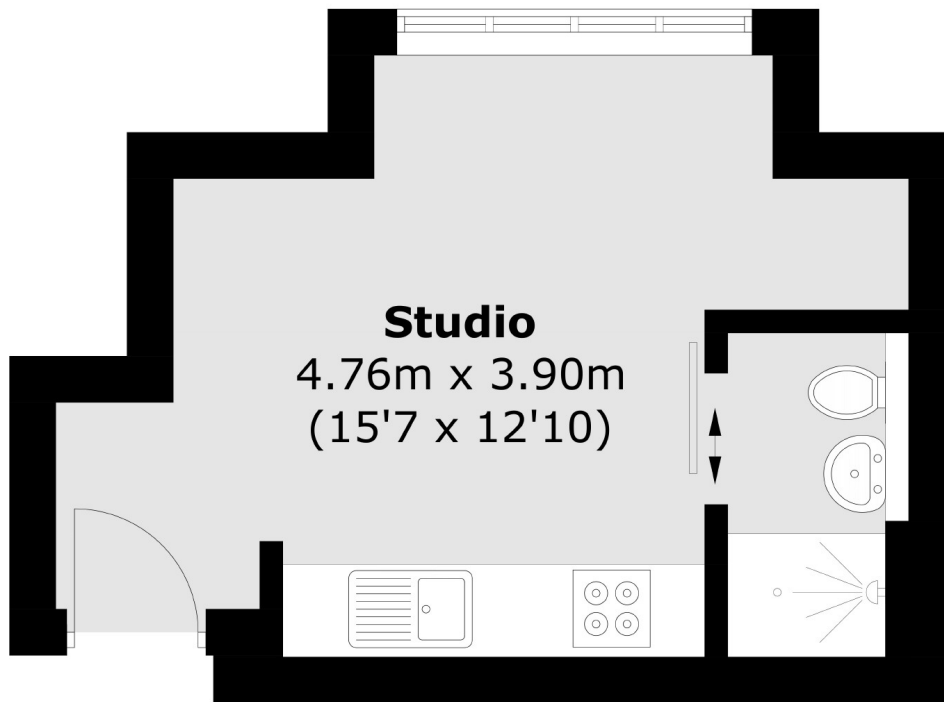
£425 pcm

Introducing this modern studio apartment in the heart of Bloomsbury to the market. The property has a sleek finish and the building benefits from an on-site gym, a day porter and laundry facilities.

Albany House is situated on Judd Street, Russell Square, Kings Cross and St Pancras International stations are all close by, as well as The Brunswick Centre with its array of shops and restaurants.

- Central Location • Renovated Mansion Block • Day Porter •
- Modern • On-site Gym • Studio •

Frank Harris & Co.



Total area (approx.): 17.8 sq. m (191.6 sq. ft)

Frank Harris & Co. Bloomsbury and Kings Cross
81 Marchmont Street,
London, WC1N 1AL
020 7387 0077
bloomsburylettings@frankharris.co.uk

Energy Rating: . We aim to make our particulars both accurate and reliable. However they are not guaranteed; nor do they form part of an offer or contract. If you require clarification on any points then please contact us, especially if you're traveling some distance to view. Please note that appliances and heating systems have not been tested and therefore no warranties can be given as to their good working order.

