

# Frank Harris & Co.



**Bloomsbury, WC1B**

**£1,250,000**

A beautifully refurbished two bedroom, two bathroom apartment with a private balcony in the prestigious Bedford Court Mansions. Offering a share of the freehold, high ceilings, bright interiors, and access to the Bedford Square communal garden. This elegant home benefits from lift access, 24-hour concierge, double glazing and the security of a renowned portered block.



Bedford Court Mansions is moments from Covent Garden, Soho, and the West End, offering world-class dining, shopping, and theatres. The British Museum and leafy Bloomsbury squares are nearby, with excellent transport links via Tottenham Court Road (Elizabeth, Central & Northern lines) and Holborn (Central & Piccadilly lines).

- Heating & Hot Water Included • High Ceilings • Prestigious Portered Block •
  - Private Balcony • Share Of Freehold • Modernly Refurbished •
-



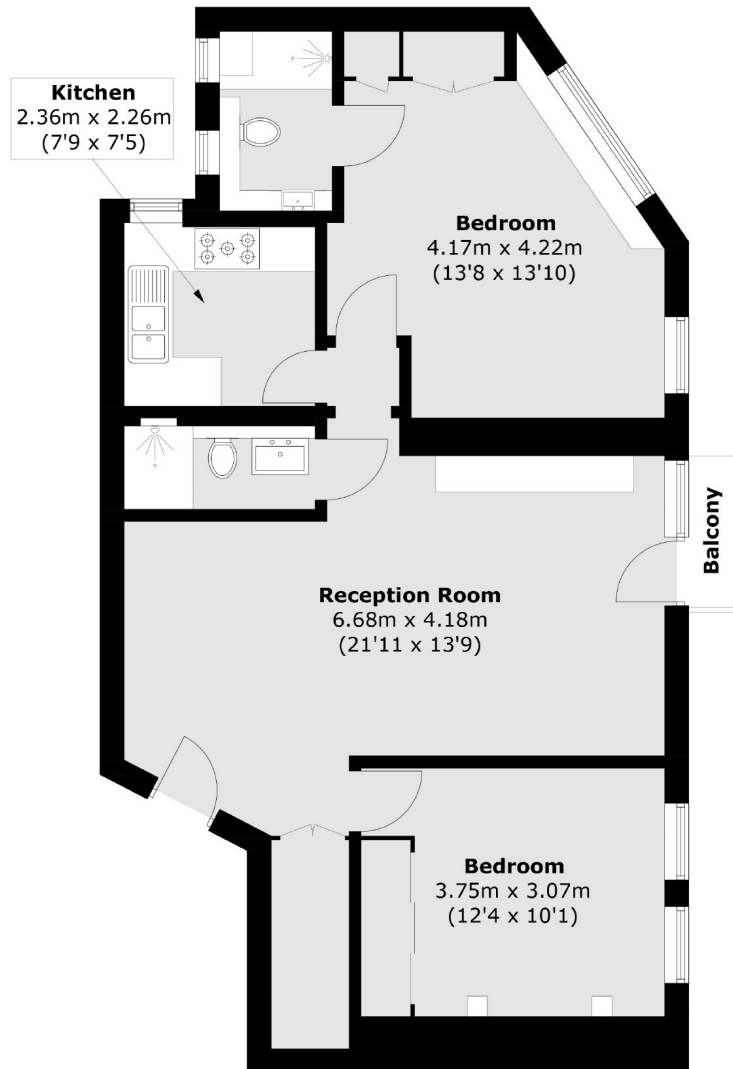








# Frank Harris & Co.



Approx Internal Area: 71.8 sq. m (772.8 sq. ft)  
Balcony: 1.1 sq. m (11.8 sq. ft)

Frank Harris & Co. Bloomsbury and Kings Cross  
81 Marchmont Street,  
London, WC1N 1AL  
020 7405 4444  
[bloomsburysales@frankharris.co.uk](mailto:bloomsburysales@frankharris.co.uk)

Energy Rating: . We aim to make our particulars both accurate and reliable. However they are not guaranteed; nor do they form part of an offer or contract. If you require clarification on any points then please contact us, especially if you're traveling some distance to view. Please note that appliances and heating systems have not been tested and therefore no warranties can be given as to their good working order.

