

Frank Harris & Co.



Bloomsbury, WC1N

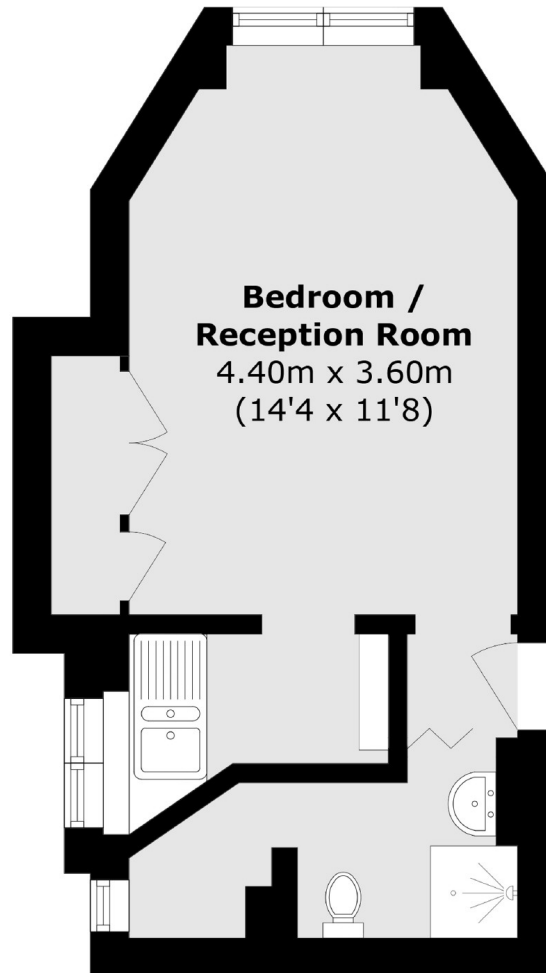
£390 pcm

A well-proportioned studio apartment set within a sought-after and well-maintained block in Bloomsbury. The property boasts a contemporary finish, plenty of natural light, good storage throughout, and a separate kitchen, making it both stylish and practical.

Jenner House is situated in the heart of Bloomsbury, offering easy access to a wide range of shops, local amenities, and the Brunswick Centre. The building also benefits from excellent transport links, with Kings Cross and Russell Square stations nearby.

- Furnished • Separate Kitchen • Built-in Wardrobes •
- Lift Access • Secure Building • Good Location •

Frank Harris & Co.



Total area (approx.): 21.3 sq. m (229.3 sq. ft)

Frank Harris & Co. Bloomsbury and Kings Cross
81 Marchmont Street,
London, WC1N 1AL
020 7387 0077
bloomsburylettings@frankharris.co.uk

Energy Rating: E. We aim to make our particulars both accurate and reliable. However they are not guaranteed; nor do they form part of an offer or contract. If you require clarification on any points then please contact us, especially if you're traveling some distance to view. Please note that appliances and heating systems have not been tested and therefore no warranties can be given as to their good working order.

