

# Frank Harris & Co.



York Way, N1

£450,000

Attractive period apartment featuring high ceilings and a Juliette balcony, ideally located near King's Cross. Offered with no onward chain and benefiting from a low service charge.



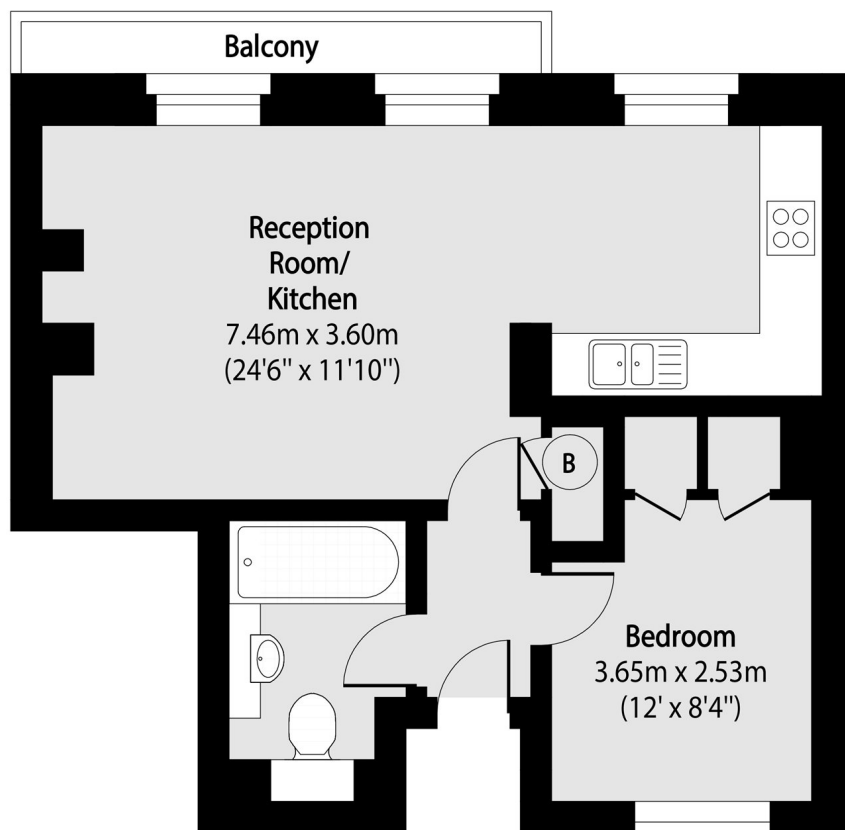
York Way offers outstanding connectivity across central London and is just moments from King's Cross St. Pancras. The neighbourhood has a lively urban character with a mix of modern developments, amenities, and excellent transport options. It is also a walk away from Coal Drops Yard, which offers boutiques, restaurants, cafés, bars, and cultural events in a cobbled setting.

- Juliette Balcony • King's Cross • Period Property •
- No Onward Chain • High Ceilings • Low Service Charge •





# Frank Harris & Co.



Total area (approx): 41.03 sqm (442 sq. ft)

Balcony total area (approx): 2.50 sq m (27 sq. ft)

Frank Harris & Co. Bloomsbury and Kings Cross  
81 Marchmont Street,  
London, WC1N 1AL  
020 7405 4444  
[bloomsburysales@frankharris.co.uk](mailto:bloomsburysales@frankharris.co.uk)

Energy Rating: . We aim to make our particulars both accurate and reliable. However they are not guaranteed; nor do they form part of an offer or contract. If you require clarification on any points then please contact us, especially if you're traveling some distance to view. Please note that appliances and heating systems have not been tested and therefore no warranties can be given as to their good working order.

