

Frank Harris & Co.



Bramer, Cromer Street, WC1H

£375,000

A great size studio apartment located on the 2nd floor with a separate kitchen and Juliette balcony. The property would make a perfect first home, London base or 'buy to let' investment.



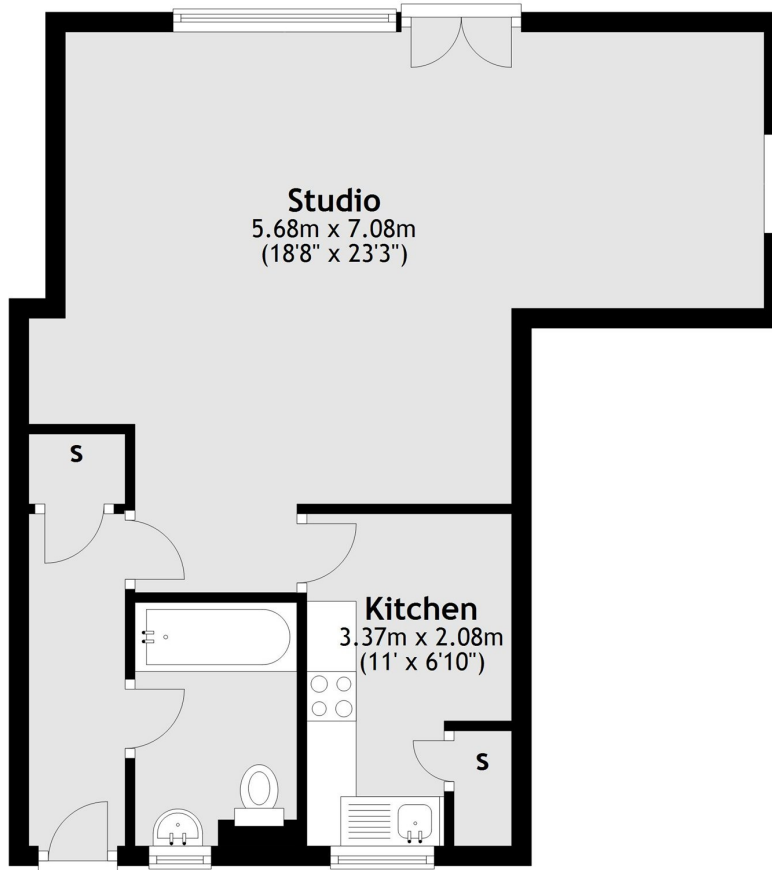
Bramber is set in the heart of Bloomsbury and offers everything from independent cafés to High Street chains within The Brunswick Centre. The nearest tube station is Russell Square, and King's Cross is less than a quarter mile away.

- 500 Sq Ft Studio • Juliette Balcony • 118 Year Lease •
- Adjacent Park • Excellent Transport Links • No Onward Chain •



Frank Harris & Co.

Second Floor



Total area: approx. 46.4 sq. metres (499.8 sq. feet)

Frank Harris & Co. Bloomsbury and Kings Cross
81 Marchmont Street,
London, WC1N 1AL
020 7405 4444
bloomsburysales@frankharris.co.uk

Energy Rating: C. We aim to make our particulars both accurate and reliable. However they are not guaranteed; nor do they form part of an offer or contract. If you require clarification on any points then please contact us, especially if you're traveling some distance to view. Please note that appliances and heating systems have not been tested and therefore no warranties can be given as to their good working order.

