

Frank Harris & Co.



The Copperworks, N1

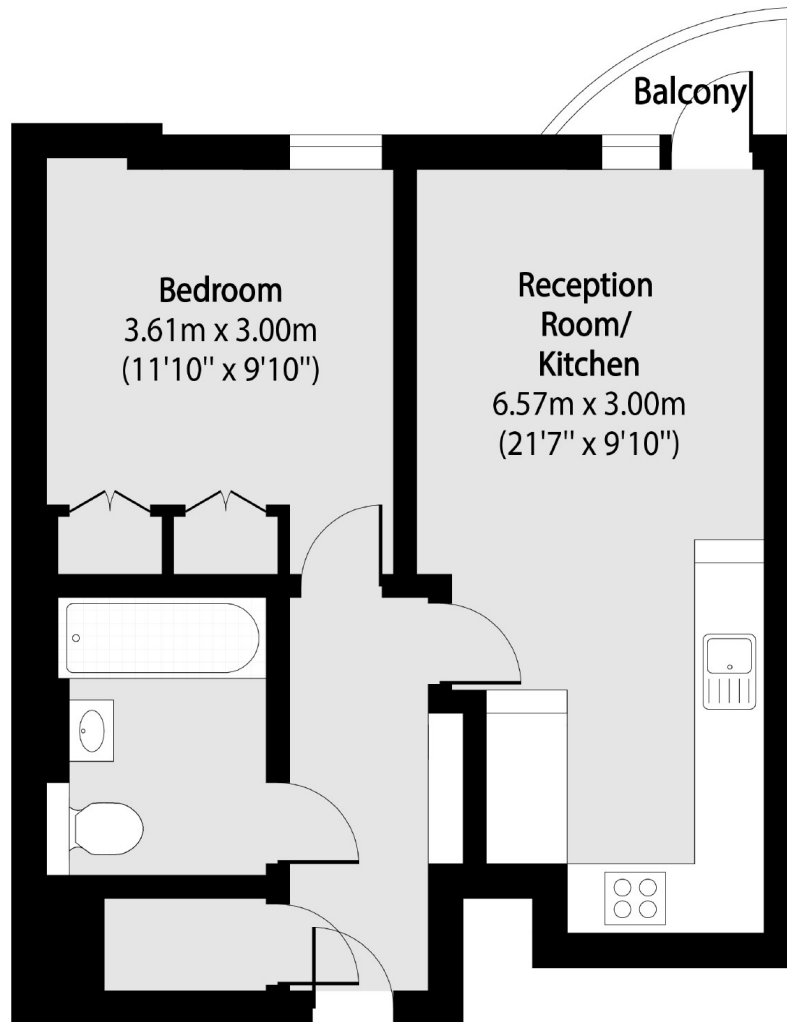
£500,000

Set within the sought-after Regent Quarter development, this bright one-bedroom flat features a spacious open-plan living area and a private balcony overlooking a quiet cobbled courtyard. Benefits include lift access, 24-hour site security, and no onward chain.

Railway Street offers a quiet, characterful setting just moments from King's Cross and St Pancras. Residents enjoy easy access to Underground, national, and international rail links, along with vibrant nearby spots like Granary Square and Coal Drops Yard.

- Second Floor • Lift Access • Private Balcony •
- Warehouse Development • 24 Hr On-Site Security • No Onward Chain •

Frank Harris & Co.



Total area (approx): 40.62 sq m (437 sq. ft)

Balcony total area (approx): 1.35 sq m (15 sq. ft)

Frank Harris & Co. Bloomsbury and Kings Cross
81 Marchmont Street,
London, WC1N 1AL
020 7405 4444
bloomsburysales@frankharris.co.uk

Energy Rating: . We aim to make our particulars both accurate and reliable. However they are not guaranteed; nor do they form part of an offer or contract. If you require clarification on any points then please contact us, especially if you're traveling some distance to view. Please note that appliances and heating systems have not been tested and therefore no warranties can be given as to their good working order.

