

Frank Harris & Co.



Defoe House, Barbican, EC2Y

£950,000

A bright two bedroom flat, situated on the second floor with views over the Barbican residents gardens. The reception room has full height windows and a door to the balcony/ fire exit, there is a modern kitchen with cream cabinets, Bosch oven, and hob, freestanding washing machine and fridge. Both bedrooms have fitted cupboards, the bathroom has a new bath with a shower attachment, wash basin, re-tiled walls and a separate wc. Extended lease.



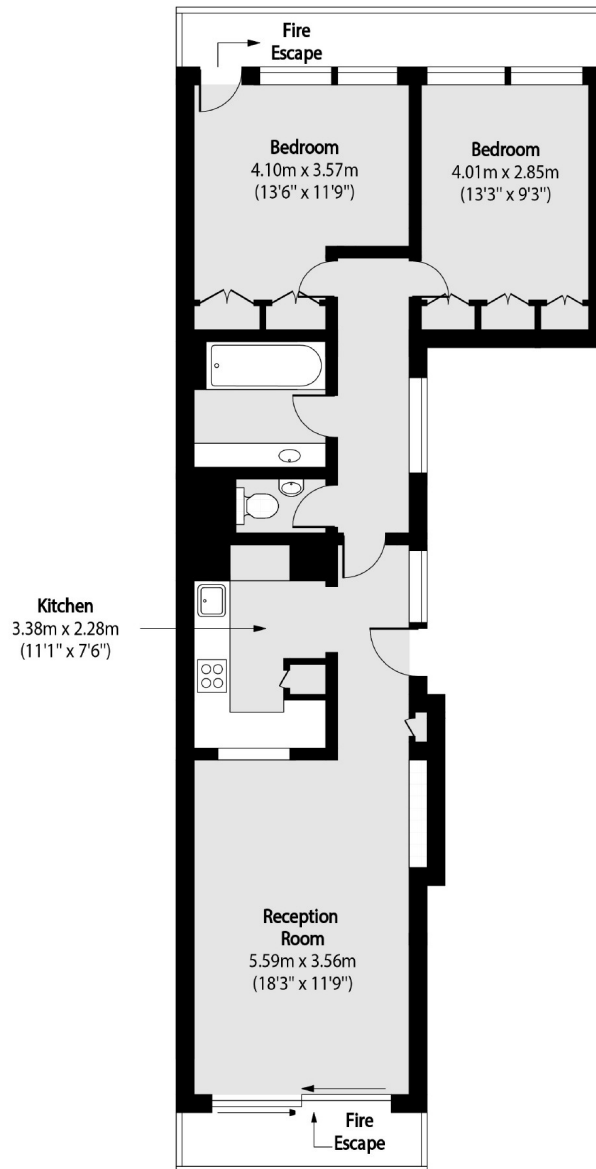
Defoe House was named after Daniel Defoe, author of Robinson Crusoe and buried in nearby Bunhill Fields. One of the most popular blocks overlooking the gardens with two double bedrooms at the rear of the property over the podium. Away from the road and a short walking distance to the Barbican Arts Centre, its restaurants and three cinema screens.

Within walking distance of Farringdon, Barbican and Moorgate stations. To access the Elizabeth line, Circle, Hammersmith and City line, Northern line and Thameslink for journeys to Luton and Gatwick Airport.

- Two bedroom flat • Type 21 • Second floor •
- Refurbished kitchen • Extended lease • No onward chain •



Frank Harris & Co.



Total area (approx): 73.92 sq m (796 sq. ft)

Frank Harris & Co. Barbican and City
87 Long Lane, London,
EC1A 9ET
020 7600 7000
citysales@frankharris.co.uk

Energy Rating: . We aim to make our particulars both accurate and reliable. However they are not guaranteed; nor do they form part of an offer or contract. If you require clarification on any points then please contact us, especially if you're traveling some distance to view. Please note that appliances and heating systems have not been tested and therefore no warranties can be given as to their good working order.

