

Frank Harris

— & Co. —



Islington, N1

£1,150 Per week

An immaculate three bedroom house located on this quiet garden square in Islington. Set over two floors, this house has a recently renovated interior, with lots of storage space. Ready to move in to immediately



John Spencer Square is located in Canonbury, close to the local transport links at Highbury & Islington (Tube & Overground) and Canonbury (Overground) stations

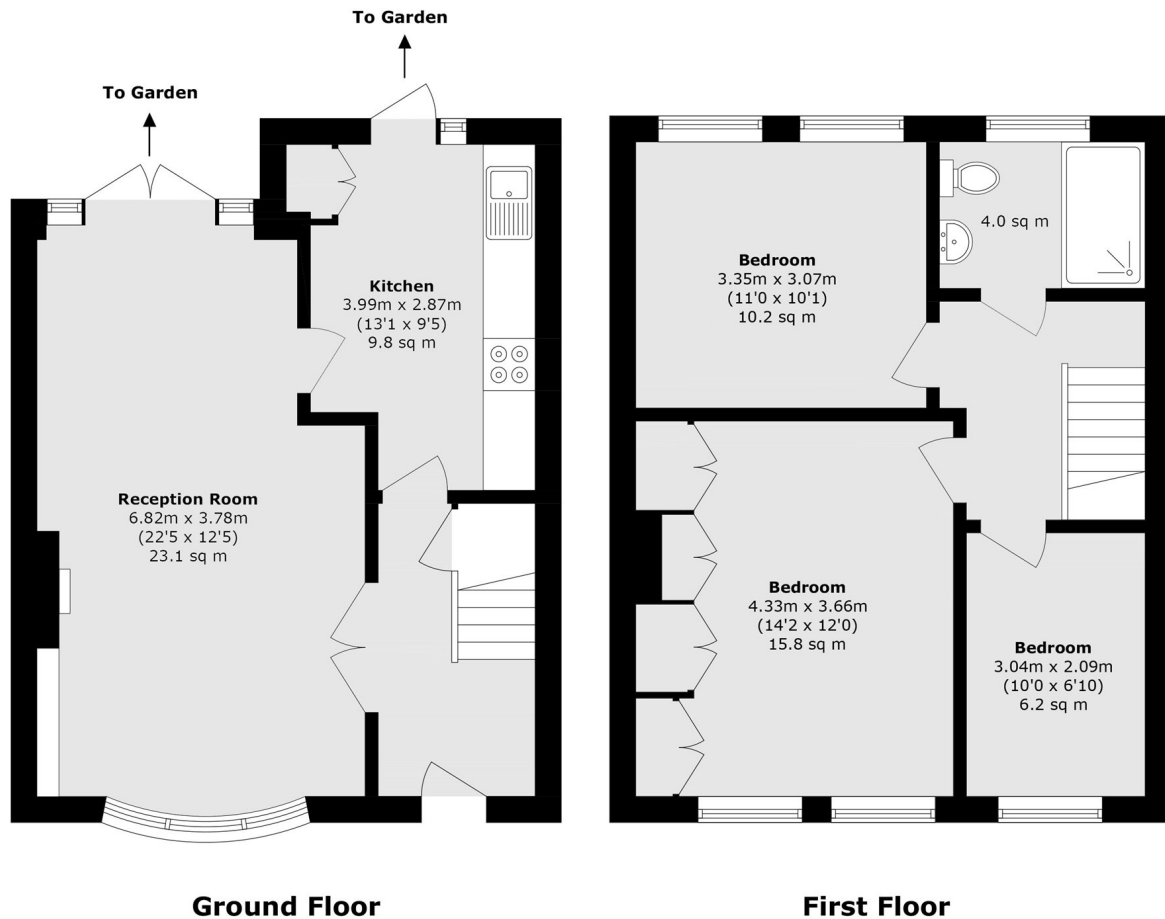
- Three Bedroom House • New Kitchen & Bathroom • Garden Square •
- Free Parking • Patio Garden • Furnished •







Frank Harris & Co.



Total area (approx.): 84.8 sq. m (912.7 sq. ft)

Frank Harris & Co. Barbican and City
87 Long Lane, London,
EC1A 9ET
020 7601 1919
citylettings@frankharris.co.uk

Energy Rating: D. We aim to make our particulars both accurate and reliable. However they are not guaranteed; nor do they form part of an offer or contract. If you require clarification on any points then please contact us, especially if you're traveling some distance to view. Please note that appliances and heating systems have not been tested and therefore no warranties can be given as to their good working order.

