

Frank Harris & Co.



City of London, EC2Y

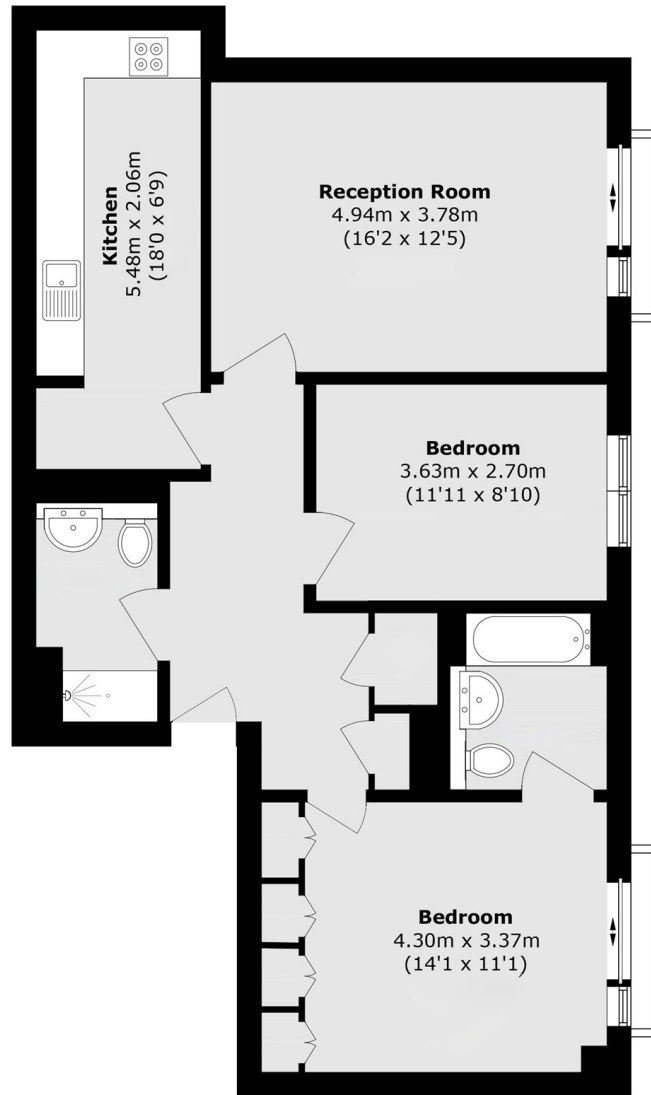
£807 Per week

An attractive two bedroom apartment with a contemporary interior, presented in excellent condition. The flat is on the 2nd floor of this modern residential building located on Bridgewater Square, next to the Barbican.

Bridgewater Square is a small, secluded garden square located just off Beech Street. Nearest local transport links are close by at Barbican station, with Moorgate and Farringdon stations also nearby.

- Two Bedrooms • Two Bathrooms • Great Location •
- Excellent Condition • Refitted Kitchen • Furnished •

Frank Harris & Co.



Total area (approx.): 76.5 sq. m (823.4 sq. ft)

Frank Harris & Co. Barbican and City
87 Long Lane, London, EC1A
9ET
020 7601 1919
citylettings@frankharris.co.uk

Energy Rating: C. We aim to make our particulars both accurate and reliable. However they are not guaranteed; nor do they form part of an offer or contract. If you require clarification on any points then please contact us, especially if you're traveling some distance to view. Please note that appliances and heating systems have not been tested and therefore no warranties can be given as to their good working order.

