

Frank Harris — & Co. —



Bezier Apartments, EC1Y

£850,000

A spacious two bedroom apartment set on the third floor of The Bezier apartments, stands at the intersection of Shoreditch, Hoxton and the City of London. The apartment has two double bedrooms, a bathroom, en-suite shower room and a large living area which is open plan to the contemporary kitchen. Residents have the services of 24 hour concierge, and the on-site facilities which include gym, sauna and steam room. Approx 1021sqft,94.9sq.m.



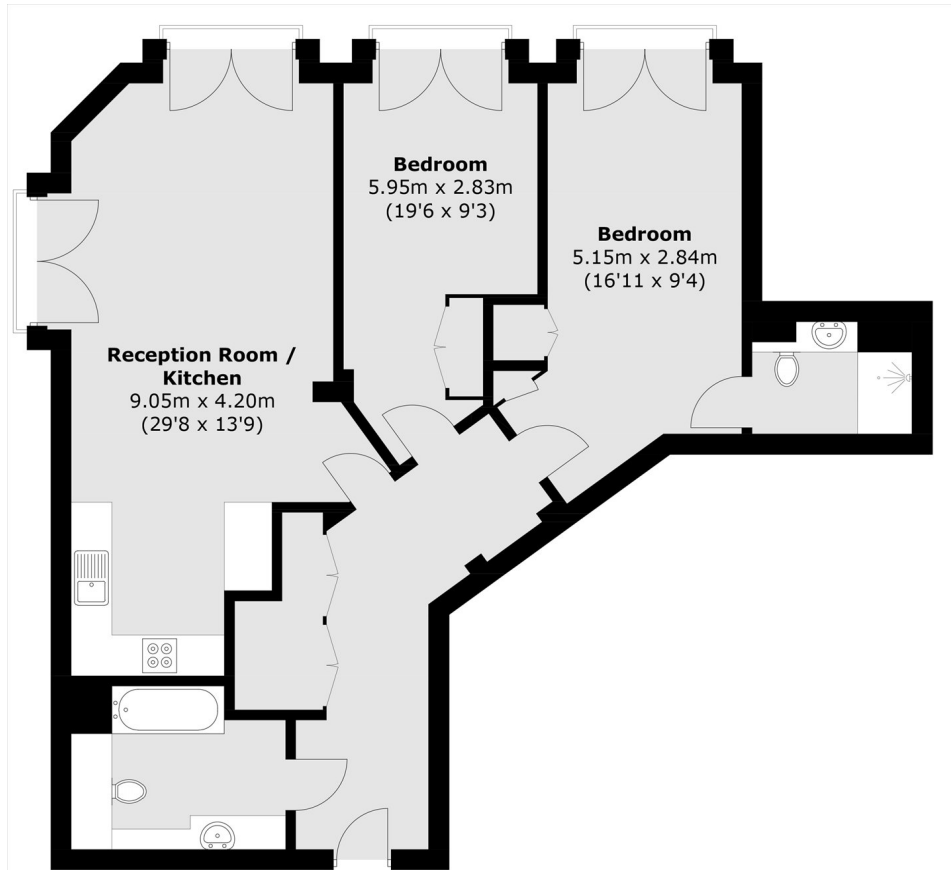
The location makes for an easy walk to anywhere in the City of London, Clerkenwell, Shoreditch and Spitalfields. There are a number of five star hotels nearby including; The Ned, Nobu, South Place, Mondrian and Montcalm. Shopping facilities include a Marks and Spencer food and clothes store in Moorgate and a Sainsburys on Old Street. The prestigious Gails Bakery is located below the building. There is a good selection of bars and restaurants close by and cinema screens at the Barbican and Islington.

Adjacent to Old Street station (Northern line) and about 0.7 mile / 1126 metres from Liverpool Street station with access to the Central, Circle, Hammersmith and City, Metropolitan, Elizabeth line and Network Rail.

- Two Bedroom Apartment • Third Floor • No onward chain. •
- Residents Gym • Rooftop Terrace • 24 Hour Concierge •



Frank Harris & Co.



Total area (approx.): 94.9 sq. m (1,021.5 sq. ft)

Frank Harris & Co. Barbican and City
87 Long Lane, London,
EC1A 9ET
020 7600 7000
citysales@frankharris.co.uk

Energy Rating: B. We aim to make our particulars both accurate and reliable. However they are not guaranteed; nor do they form part of an offer or contract. If you require clarification on any points then please contact us, especially if you're traveling some distance to view. Please note that appliances and heating systems have not been tested and therefore no warranties can be given as to their good working order.

