

# Frank Harris — & Co. —



**Lauderdale Tower, EC2Y**

**£1,153 Per week**

A stunning apartment within a Barbican tower, that has been completely renovated to create a wonderful contemporary living space. Situated on a high floor with a west/ north aspect and balcony offering panoramic views over London.



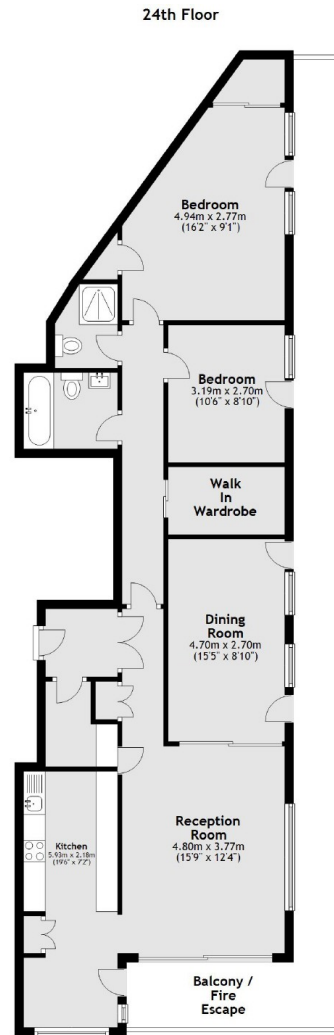
Lauderdale Tower is positioned on the western edge of the Barbican Estate, across the road from Barbican station and close to both St Paul's and Farringdon stations.

- Two/Three Bedrooms • Two Bathrooms • Modern Kitchen •
  - Balcony • 24 hour Porters • Unfurnished •
-





# Frank Harris & Co.



Total area: approx. 100.3 sq. metres (1079.7 sq. feet)

Frank Harris & Co. Barbican and City  
87 Long Lane, London,  
EC1A 9ET  
020 7601 1919  
[citylettings@frankharris.co.uk](mailto:citylettings@frankharris.co.uk)

Energy Rating: D. We aim to make our particulars both accurate and reliable. However they are not guaranteed; nor do they form part of an offer or contract. If you require clarification on any points then please contact us, especially if you're traveling some distance to view. Please note that appliances and heating systems have not been tested and therefore no warranties can be given as to their good working order.

