

# Frank Harris & Co.



## The City, EC1A

£785 Per week

This property is a quiet and smartly presented, two bedroom, two bathroom apartment in a modern development in the middle of the City of London. The property features a balcony and is offered unfurnished. There is a daytime concierge in the building.



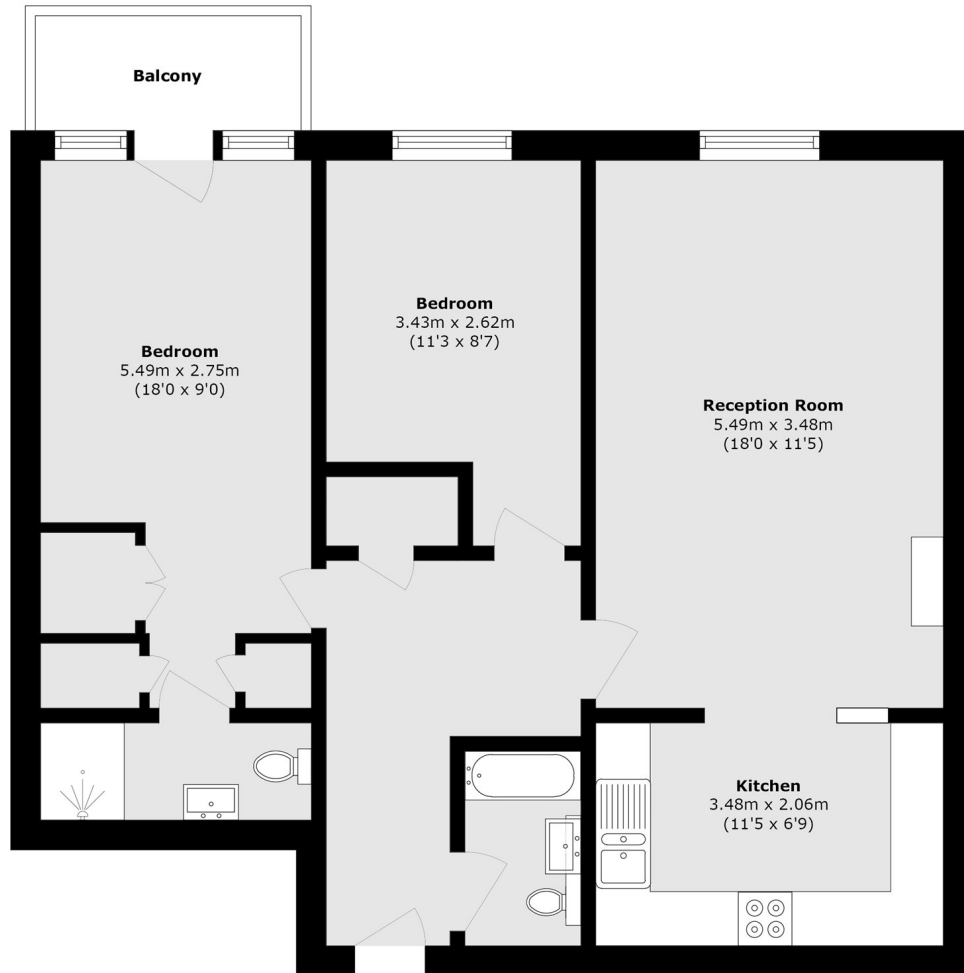


Spencer Heights is on Bartholomew Close, one of the quiet side streets between Smithfield market and Barbican, located about 1/4 mile from local transport links at Barbican, Farringdon, St. Paul's and City Thameslink stations.

- Two Bedrooms • Two Bathrooms • Refurbished Kitchen •
- Refurbished Bathrooms • Balcony • Daytime Concierge •



# Frank Harris & Co.



Total area (approx.): 67.5 sq. m (726.5 sq. ft)  
Balcony area (approx.): 3.05 sq. m (32.8 sq. ft)

Frank Harris & Co. Barbican and City  
87 Long Lane, London,  
EC1A 9ET  
020 7601 1919  
[citylettings@frankharris.co.uk](mailto:citylettings@frankharris.co.uk)

Energy Rating: B. We aim to make our particulars both accurate and reliable. However they are not guaranteed; nor do they form part of an offer or contract. If you require clarification on any points then please contact us, especially if you're traveling some distance to view. Please note that appliances and heating systems have not been tested and therefore no warranties can be given as to their good working order.

