

Frank Harris & Co.



Thomas More House, EC2Y

£450,000

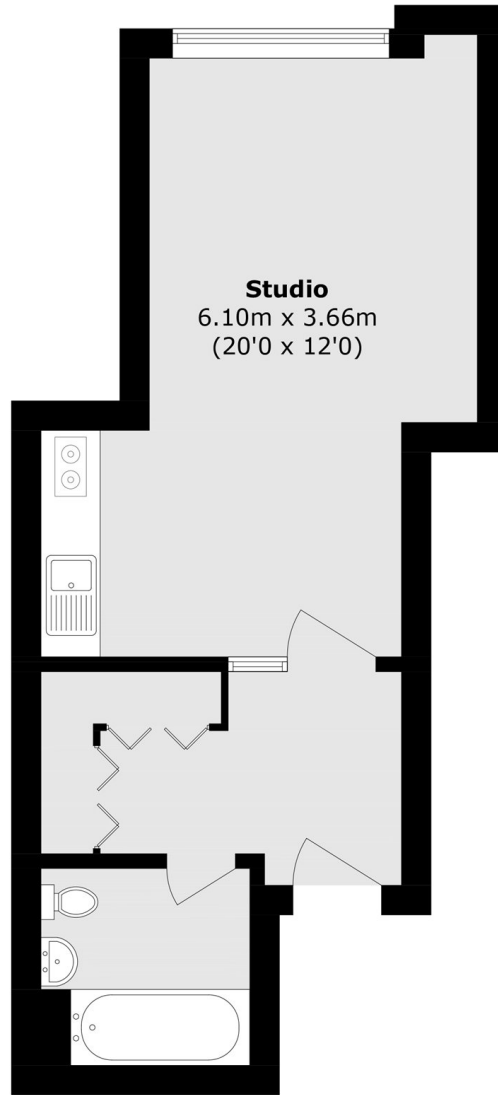
This charming studio has a large inner hall area with two large fitted cupboards, a full size bathroom, an open plan kitchen with the original Brooke Marine cabinets and stainless steel worktop, a fitted wallbed and a large U shaped window looking directly onto the residents only gardens. With wooden flooring throughout. Lease in process of being extended.

Transport links from Thomas More House include Barbican, Farringdon (Elizabeth line, Circle and Metropolitan Line, Hammersmith and City) St. Paul's (Central Line).

- Stunning Studio • Type 13 • Overlooking Gardens •
- Quiet Location • Fitted Wallbed • No Onward Chain •

Frank Harris

& Co.



Total area (approx.): 33.4 sq. m (359.5 sq. ft)

Frank Harris & Co. Barbican and City
87 Long Lane, London,
EC1A 9ET
020 7600 7000
citysales@frankharris.co.uk

Energy Rating: N/A. We aim to make our particulars both accurate and reliable. However they are not guaranteed; nor do they form part of an offer or contract. If you require clarification on any points then please contact us, especially if you're traveling some distance to view. Please note that appliances and heating systems have not been tested and therefore no warranties can be given as to their good working order.

