

Frank Harris & Co.



Shoreditch, E2

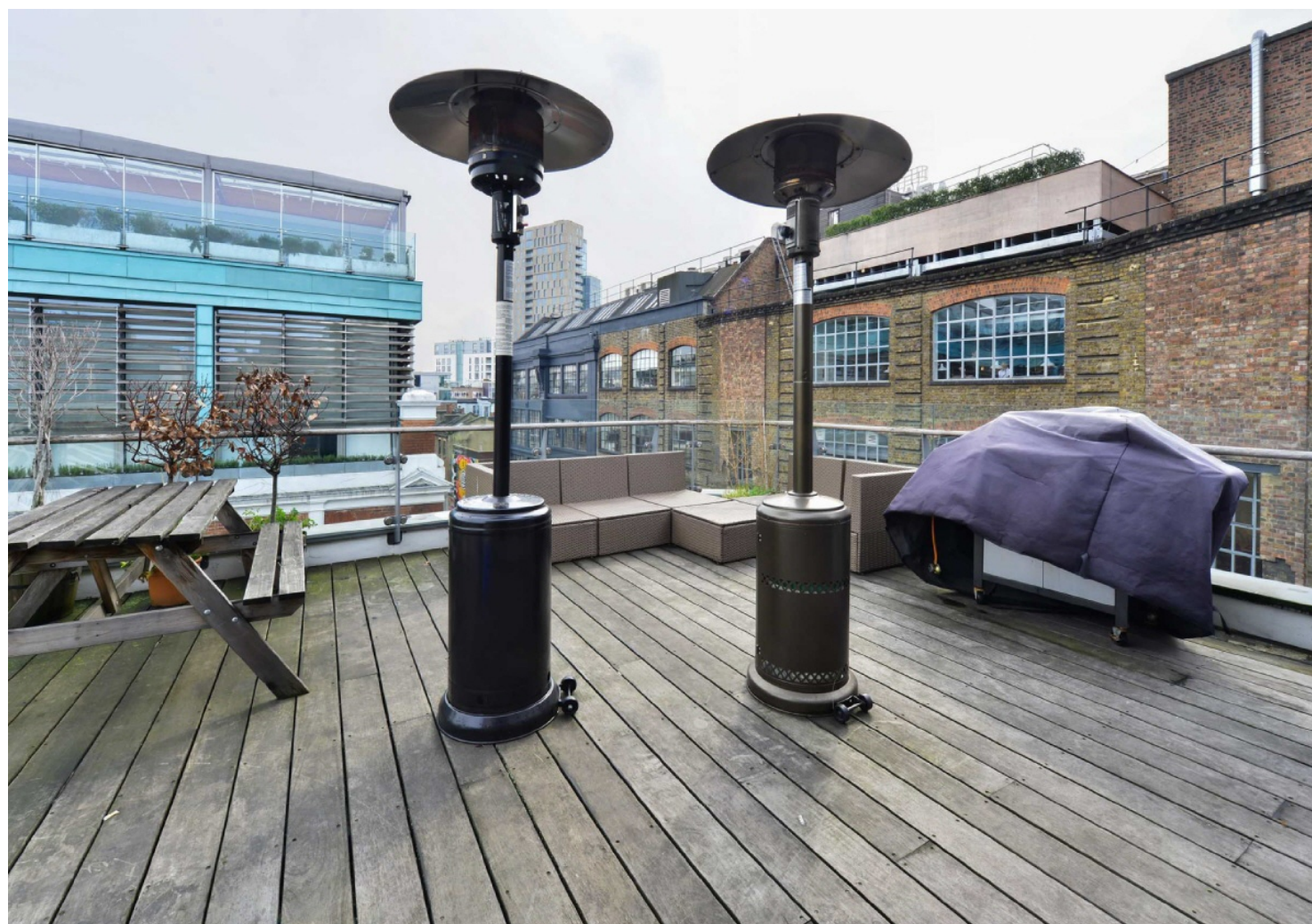
£1,500 Per week

A three bedroom duplex penthouse apartment with three bathrooms, available to rent just off Shoreditch High Street. The property is finished to a high specification and features a large private terrace.

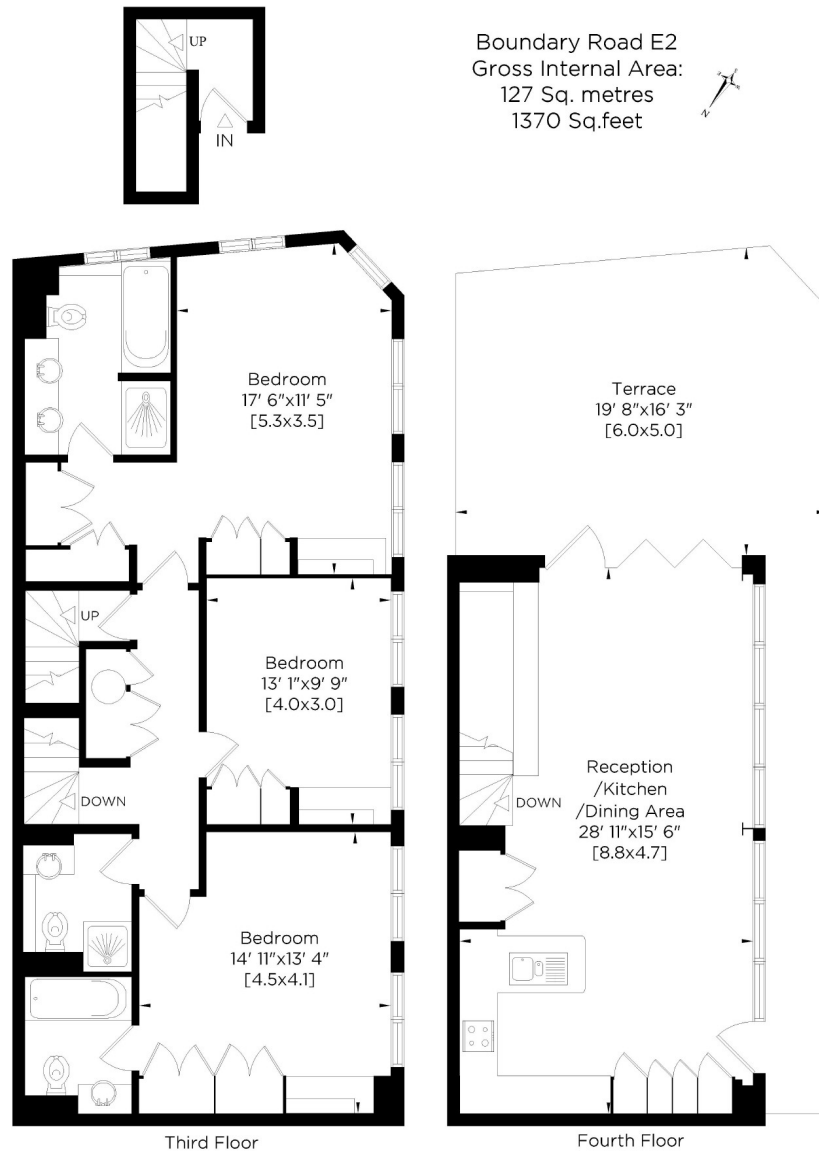


Located in the heart of Shoreditch, an array of shops, bars and restaurants are just a short walk away. Shoreditch High Street station is on the doorstep at just 0.1 miles, and Hoxton, Old Street and Liverpool Street Stations are all around a 0.5 mile walk away.

- Three double bedrooms • Three bathrooms • Large Terrace •
 - Split-Level • Furnished • Available Now •
-



Frank Harris & Co.



Whilst every attempt has been made to ensure the accuracy of this floor plan, measurements of doors, windows, rooms and Sq footage are approximate within 5% accuracy. For identification purposes only. Not to be used as part of the decision to buy. You must recheck all details before purchase and only purchase when you have confirmed them. No appliances tested. Not to scale. © www.steele.london - Email: patricia@steele.london - Tel: 07847 219401

Frank Harris & Co. Barbican and City

87 Long Lane, London,

EC1A 9ET

020 7601 1919

citylettings@frankharris.co.uk

Energy Rating: . We aim to make our particulars both accurate and reliable. However they are not guaranteed; nor do they form part of an offer or contract. If you require clarification on any points then please contact us, especially if you're traveling some distance to view. Please note that appliances and heating systems have not been tested and therefore no warranties can be given as to their good working order.

