

Frank Harris — & Co. —



City of London, EC1A

£460 Per week

A very well presented, contemporary studio apartment within this modern development in the City of London. The property is spacious, bright and offered furnished complete with pull down wall bed. Available now.



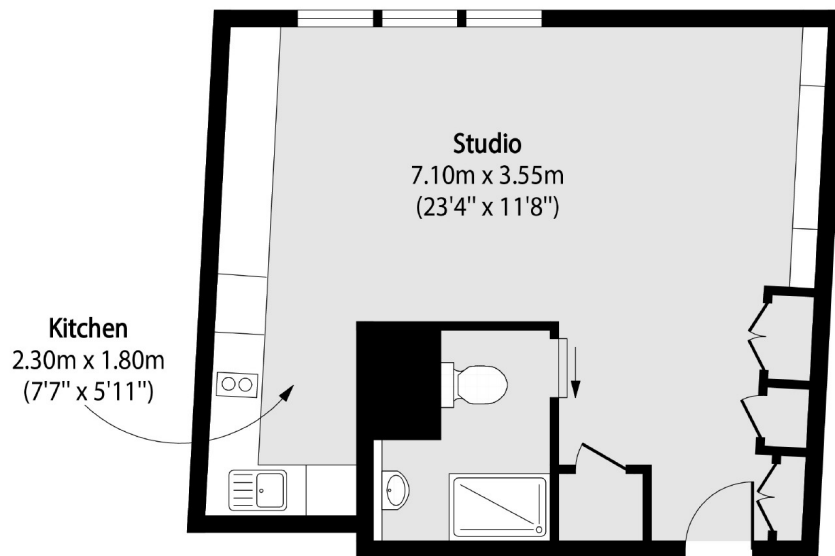
Hosier Lane is in the City of London, between West Smithfield and Holborn Viaduct and close to the Old Bailey and St Paul's. Nearest transport links are at City Thameslink, Farringdon, Barbican and St Paul's stations.

- Large Studio Apartment • Open Plan Living • Modern Interior •
 - Wood Floors • Concierge • Available Now •
-



Frank Harris

& Co.



Total area (approx): 42.71 sq m (460 sq. ft)

Frank Harris & Co. Barbican and City
87 Long Lane, London,
EC1A 9ET
020 7601 1919
citylettings@frankharris.co.uk

Energy Rating: . We aim to make our particulars both accurate and reliable. However they are not guaranteed; nor do they form part of an offer or contract. If you require clarification on any points then please contact us, especially if you're traveling some distance to view. Please note that appliances and heating systems have not been tested and therefore no warranties can be given as to their good working order.

