

# Frank Harris & Co.



## Blackfriars Road, SE1

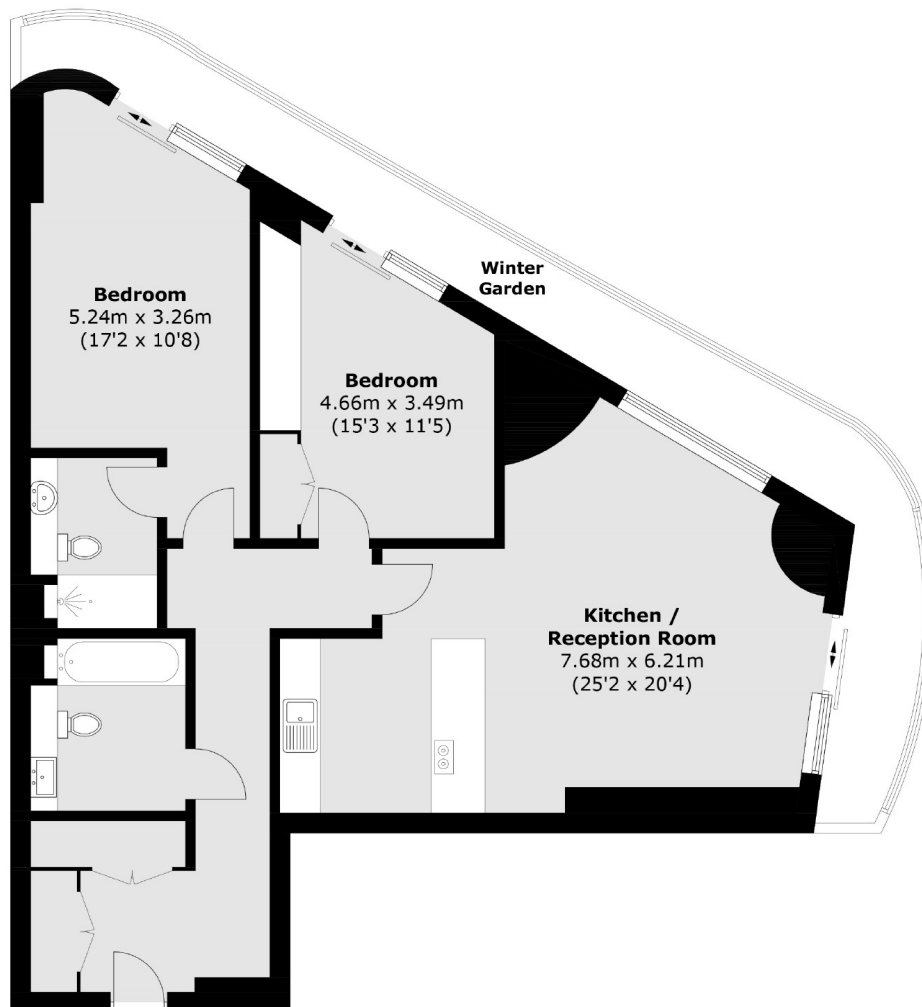
£1,384 pcm

Stunning two bedroom apartment located on the 16th floor of One Blackfriars. The apartment consists of two double bedrooms, two bathroom with an open plan living and kitchen. The property further benefits from being fully furnished, a large amount of storage space and a winter garden. There is also a resident' gym and swimming pool available, as well as a resident's lounge, golf simulator, wine room, cinema room and spa facilities.

The apartment is close to Blackfriars, Southwark and Waterloo Stations. Incredibly well located close to some of London's most popular attractions including Shakespeare's Globe, the Tate Modern and Borough Market.

- Two Double Bedrooms • Two Bathrooms • Furnished •

# Frank Harris & Co.



Total area (approx.): 100.5 sq. m (1,081.8 sq. ft)  
Winter Garden : 20.2 sq. m (217.4 sq. ft)

Frank Harris & Co. South Bank and Waterloo  
123 Stamford Street, London,  
SE1 9NN  
020 7590 7100  
[southbanklettings@frankharris.co.uk](mailto:southbanklettings@frankharris.co.uk)

Energy Rating: B. We aim to make our particulars both accurate and reliable. However they are not guaranteed; nor do they form part of an offer or contract. If you require clarification on any points then please contact us, especially if you're traveling some distance to view. Please note that appliances and heating systems have not been tested and therefore no warranties can be given as to their good working order.

