

# Frank Harris & Co.



**Grosvenor Road, SW1V**

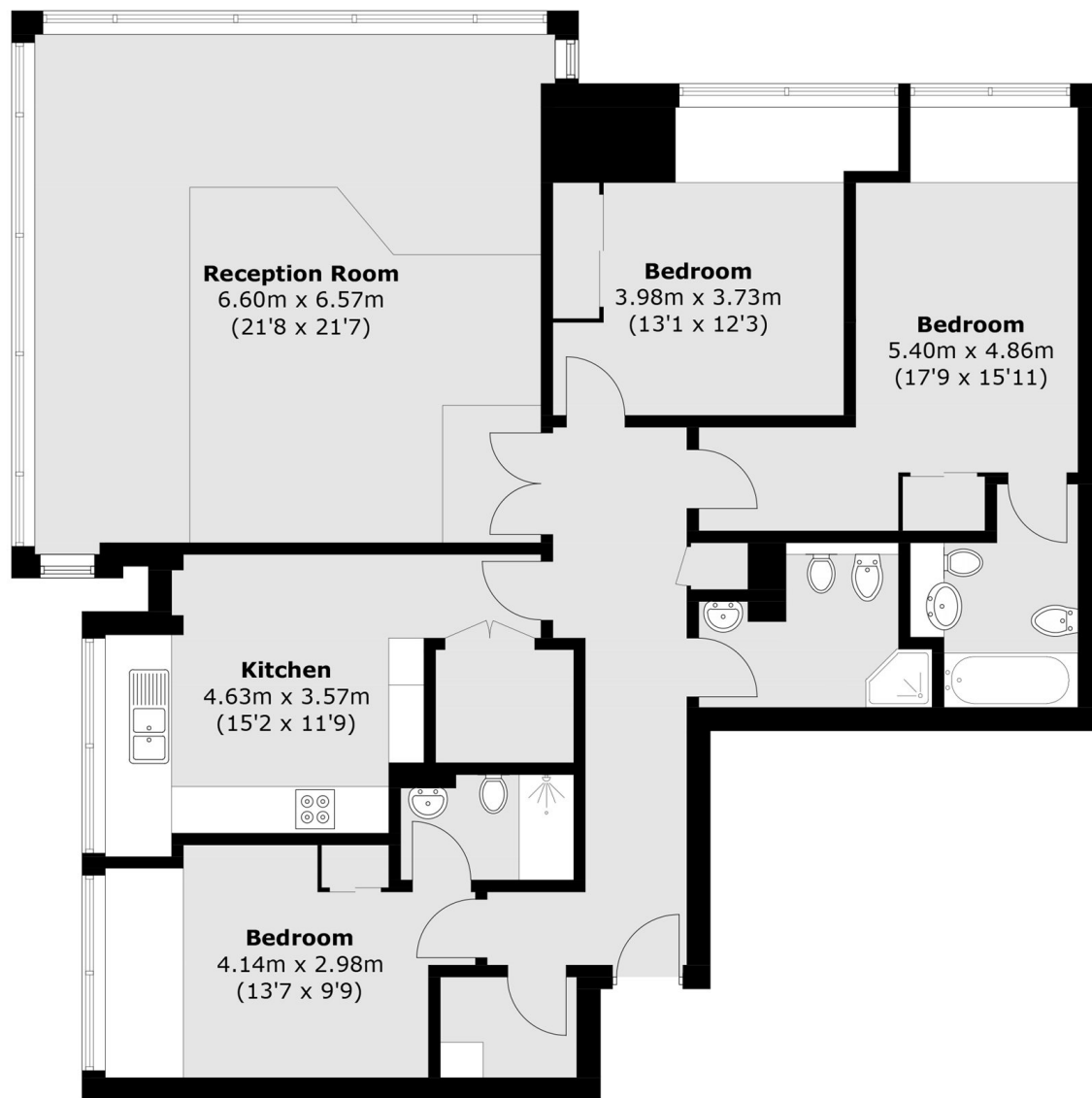
**£1,061 pcm**

This three bedroom, three bathroom property is located in the highly desirable Pimlico and comprises of a spacious living area, separate kitchen, three bedrooms and three bathrooms. There is wooden flooring throughout and views of the Thames. There is a concierge and resident's gym in the building as well as secure parking.

The Panoramic offers stunning views of the River Thames across the London skyline and is located on the north side of the river in Pimlico just moments away from Vauxhall Bridge. The nearest tube is Pimlico with access to the Victoria line and Vauxhall station nearby to access the national rail.

- Three Bedrooms • Three Bathrooms • River Views •
- 24 Hour Concierge • Secure Parking • Resident's Gym •

# Frank Harris & Co.



## Twelfth Floor

Total area (approx.): 137.8 sq. m (1,483.3 sq. ft)

Frank Harris & Co. South Bank and Waterloo  
123 Stamford Street, London,  
SE1 9NN  
020 7590 7100  
[southbanklettings@frankharris.co.uk](mailto:southbanklettings@frankharris.co.uk)

Energy Rating: C. We aim to make our particulars both accurate and reliable. However they are not guaranteed; nor do they form part of an offer or contract. If you require clarification on any points then please contact us, especially if you're traveling some distance to view. Please note that appliances and heating systems have not been tested and therefore no warranties can be given as to their good working order.

