

# Frank Harris & Co.



## Walworth Road, SE1

£1,084 Per week

In our opinion, this stunning three bedroom apartment has the best views of London's Skyline. Features large open plan living space with wooden flooring, modern Kitchen, three double bedrooms, two modern bathrooms and plenty of storage.

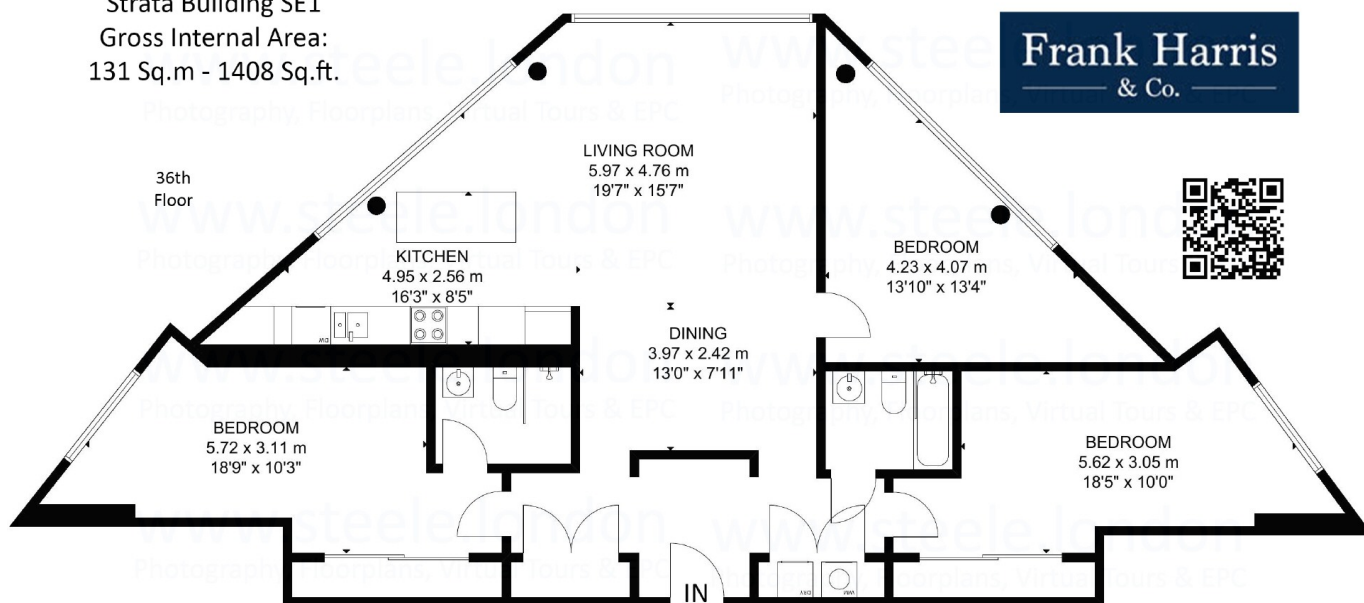
Superbly located for transport and is in the heart of the Elephant & Castle regeneration scheme. Elephant and Castle Tube Station is 0.1 miles away. The Italian street food market Mercato Metropolitano is an excellent local option for food and drinks.

- Three Bedrooms • Two Bathrooms • Open Plan Living •
- Amazing London Skyline Views • Over 1400 sq ft • On-Site Concierge •

# Frank Harris & Co.

Strata Building SE1  
Gross Internal Area:  
131 Sq.m - 1408 Sq.ft.

Frank Harris  
& Co.



Whilst every attempt has been made to ensure the accuracy of this Lettings floor plan measurements of doors, windows, rooms & Sq footage are approximate. For Identification Purposes only. The actual property will vary. Price on application for a 90 day Licence to use this Plan ©2605/2022. Not to scale.  
Photography, Floorplan, Virtual Tours, Inventory, Video & EPC's by [www.steele.london](http://www.steele.london) email. [patricia@steele.london](mailto:patricia@steele.london) Tel. 07847219401

Frank Harris & Co. South Bank and Waterloo  
123 Stamford Street, London,  
SE1 9NN  
020 7590 7100  
[southbanklettings@frankharris.co.uk](mailto:southbanklettings@frankharris.co.uk)

Energy Rating: C. We aim to make our particulars both accurate and reliable. However they are not guaranteed; nor do they form part of an offer or contract. If you require clarification on any points then please contact us, especially if you're traveling some distance to view. Please note that appliances and heating systems have not been tested and therefore no warranties can be given as to their good working order.

