

# Frank Harris & Co.



## Granby Place, SE1

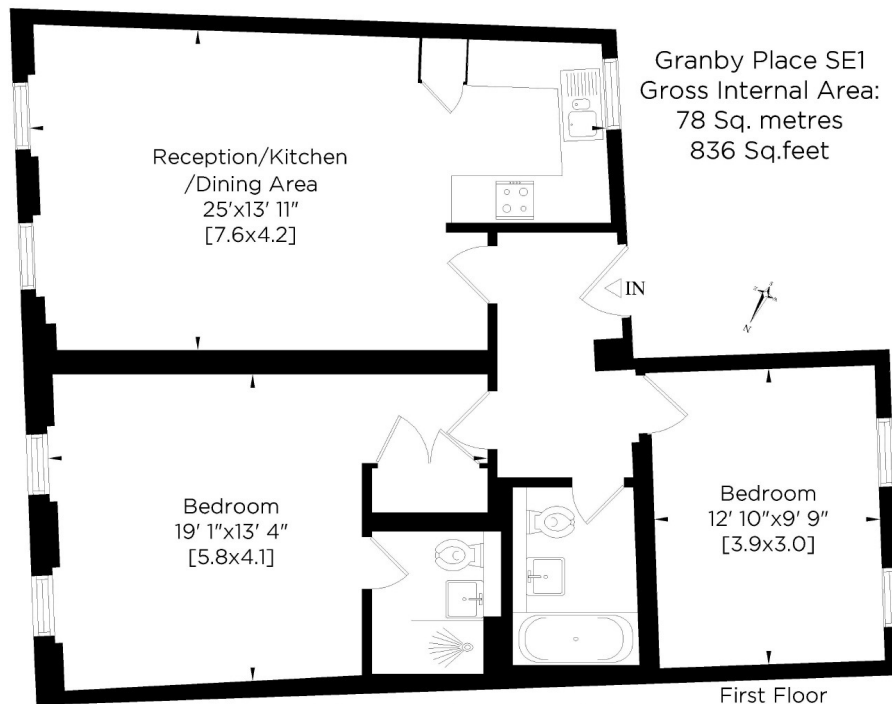
£700 pcm

Two bedroom two bathroom flat features open plan living space with wooden flooring throughout. Two double bedrooms with plenty of space to set up work from home space, ideal for sharers.

Close to Waterloo Station, Southwark tube and the many eclectic shops, bars, restaurants and theatres along The Cut together with many leisure facilities that the South Bank offers including, the Tate Modern, Royal Festival Hall and Borough Market towards London Bridge

- Two Bedrooms • Two Bathrooms • Open Plan Living •
- Wooden Flooring • Great Location •

# Frank Harris & Co.



Whilst every attempt has been made to ensure the accuracy of this floor plan, measurements of doors, windows, rooms, angles and Sq. footage are approximate within 5% accuracy. For identification purposes only. Not to be used as part of the decision to buy. You must recheck all details before purchase and only purchase when you have confirmed them. Price on application for a 90 day licence to use this plan. No appliances tested. Not to scale. ©26082020. Floorplan, EPC, Virtual Tour and Photography by: www.steele.london - Email: patricia@steele.london - Tel: 07847 219401

Frank Harris & Co. South Bank and Waterloo  
123 Stamford Street, London,  
SE1 9NN  
020 7590 7100  
[southbanklettings@frankharris.co.uk](mailto:southbanklettings@frankharris.co.uk)

Energy Rating: D. We aim to make our particulars both accurate and reliable. However they are not guaranteed; nor do they form part of an offer or contract. If you require clarification on any points then please contact us, especially if you're traveling some distance to view. Please note that appliances and heating systems have not been tested and therefore no warranties can be given as to their good working order.

