



Riverside, NW4 £800,000

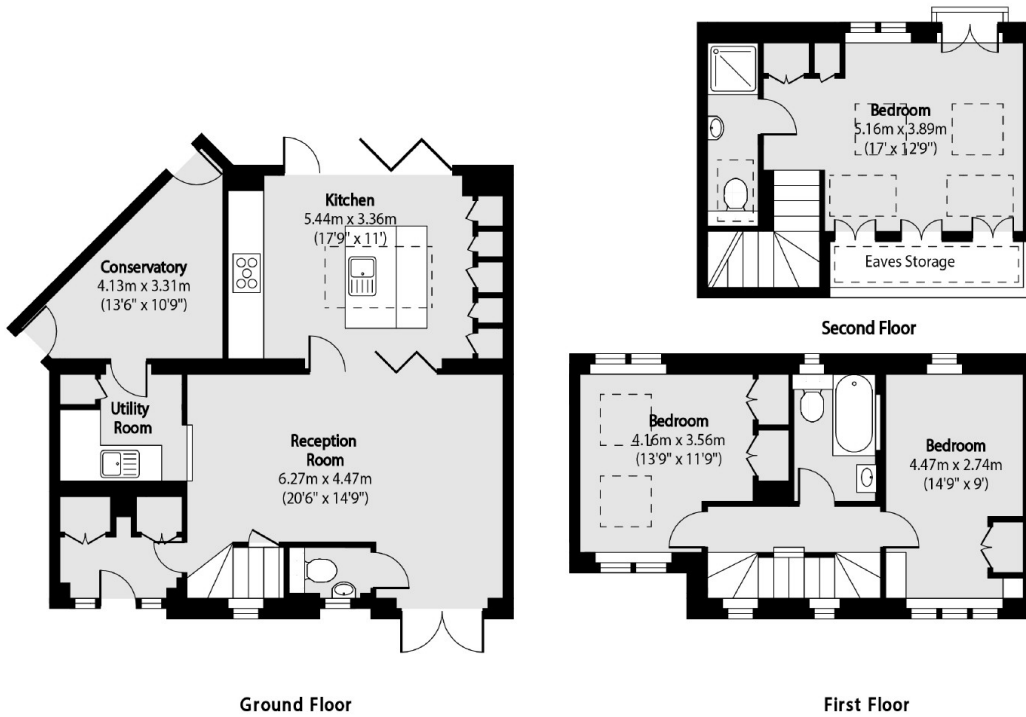
The fantastic three bedroom semi-detached family home has been newly refurbished. The house consists of a large designer kitchen, an utility room which leads out to a home gym. The first floor consists of two large double bedrooms with ample amounts of natural light and a family bathroom, then a large double bedroom with an en-suite.

This superb house is conveniently located close to Brent Cross Shopping Centre, Hendon Thameslink overground and Hendon Central underground (Northern Line).

Features

High Specification
Bespoke Fittings
Driveway
Chain Free
Semi-Detached
Quiet Road

Riverside, London, NW4



Total area (approx): 132.55 sq m (1427 sq. ft)

Eaves Storage total area (approx): 3.42 sq m (37 sq. ft)