



Layfield Road, NW4

£550,000

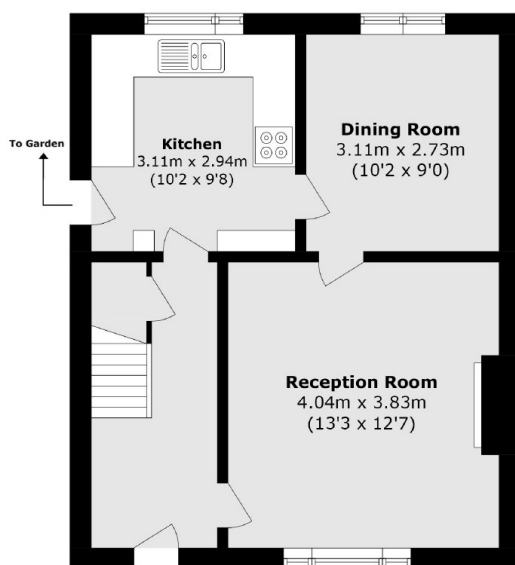
A lovely three bed semi-detached house located on Layfield Road in Hendon. This charming family home has potential to extend (STPP) has a large back garden and if is offered chain free.

Located close to Brent Cross Shopping Centre and within access of Hendon Thameslink station and Hendon Central underground station.

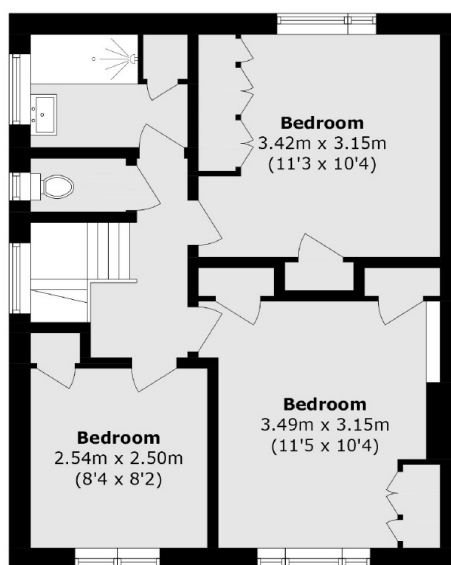
Features

- Semi-Detached
- Chain Free
- Potential to Extend (STPP)
- Large Garden
- Separate Kitchen
- Close to Brent Cross

Layfield Road, London, NW4



Ground Floor



First Floor

~~Total~~ Total area (approx.): 83.8 sq. m (902 sq. ft)

Dexters

Hendon
18 Central Circus
London
NW4 3AS
Sales
020 8545 8586

Energy Rating: E. We aim to make our particulars both accurate and reliable. However they are not guaranteed; nor do they form part of an offer or contract. If you require clarification on any points then please contact us, especially if you're traveling some distance to view. Please note that appliances and heating systems have not been tested and therefore no warranties can be given as to their good working order.

 **RICS** | Regulated
Estate Agent
and Letting Agent

dexters.co.uk