



## Evelyn Avenue, NW9

£575,000

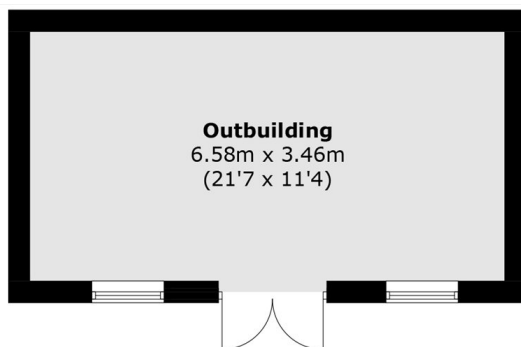
An excellent three bed semi-detached house on a quiet residential street in Kingsbury. This charming home comes with two reception rooms, a separate kitchen that has just been refurbished, a large garden and is offered chain free.

Evelyn Avenue is a quiet residential road ideally located off of Hay Lane. Kingsbury station (Jubilee line) and Colindale station (Northern line) are nearby, alongside other shops and amenities.

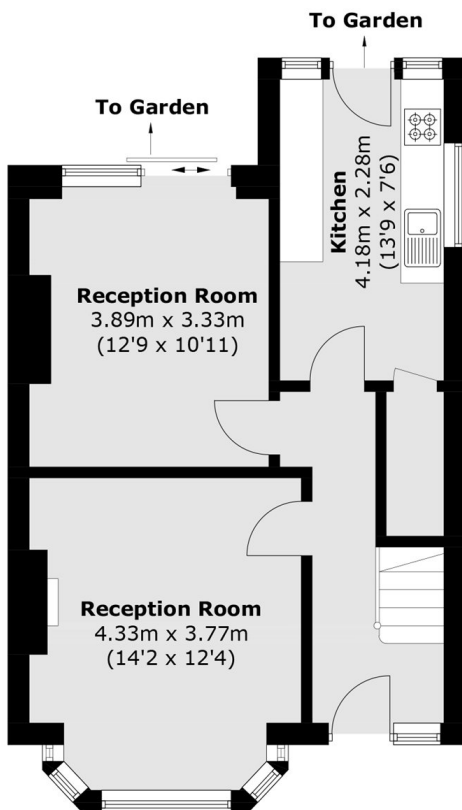
### Features

Semi-Detached  
Two Receptions  
Large Garden  
New Kitchen  
Chain Free  
Outbuilding

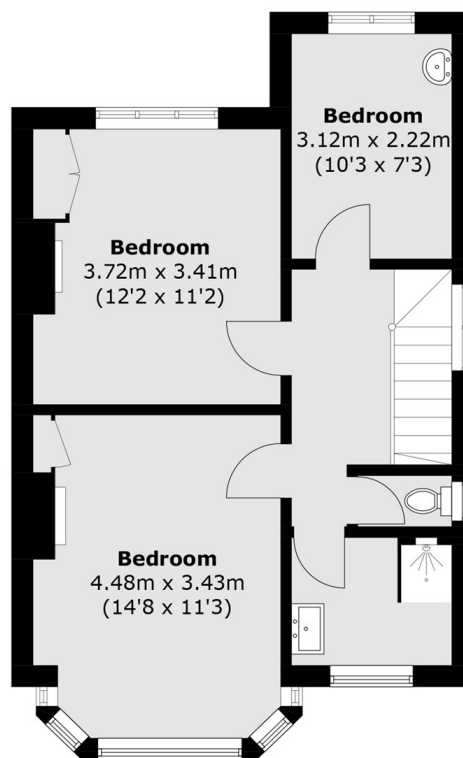
# Evelyn Avenue, London, NW9



(Not Shown In Actual Location / Orientation)



**Ground Floor**



**First Floor**

Total area (approx.): 97.9 sq. m (1053.7 sq. ft)  
Outbuilding: 23.0 sq. m (247.5 sq. ft)