



Church Lane, NW9

£675,000

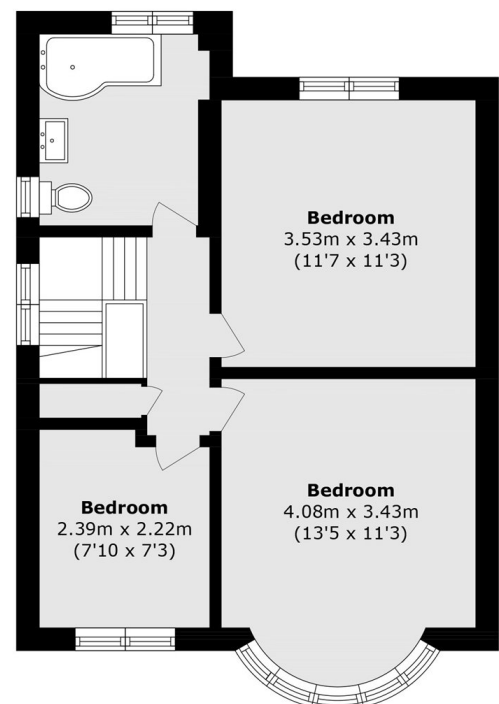
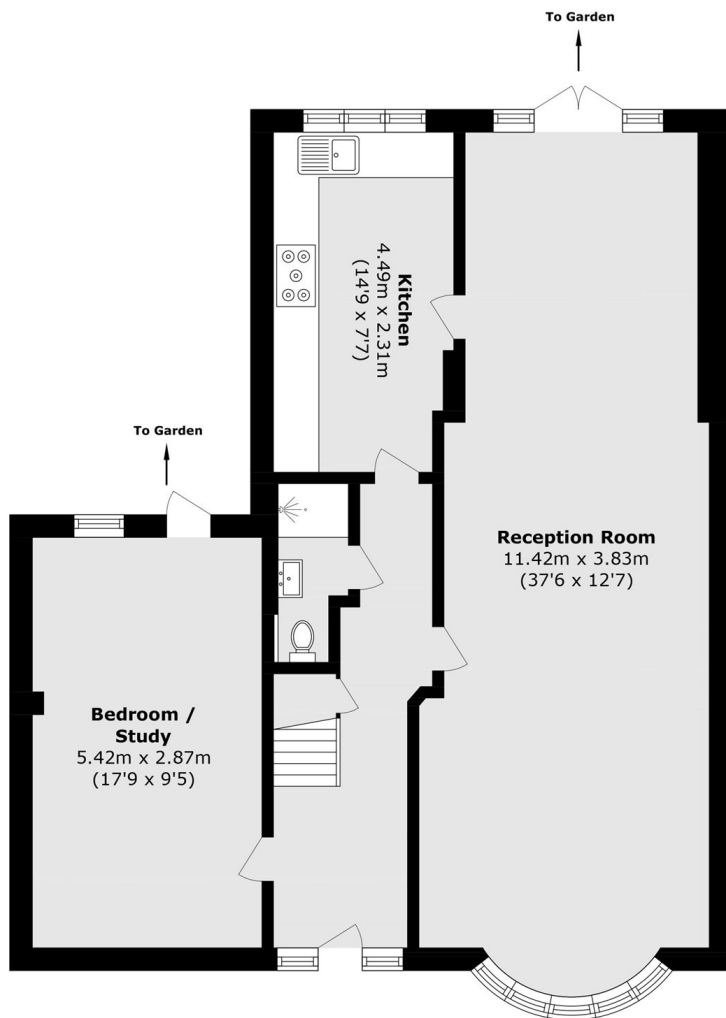
A recently refurbished semi-detached family home with four bedrooms. This amazing home comes with a huge reception room, two bathrooms, large driveway, large garden and potential to extend.

Church lane is ideally situated in a popular residential location close to transport links, schools and amenities.

Features

Semi-Detached
Four Bedrooms
Large Garden
Excellent Condition
Huge Reception
Potential to Extend STPP

Church Lane, London, NW9



Total area (approx.): 123.6 sq. m (1330.4 sq. ft)